

RESIDENCE 1B-G03
GROUND &
LEVEL 1

COURT TERRACE



2 BEDROOMS
2 BATHROOMS

INTERNAL: 76.6 m²
EXTERNAL: 16.7 m²
TOTAL: 93.2 m²

2 CARPARKS

STREET VIEW
SOUTH ASPECT
DOUBLE STOREY

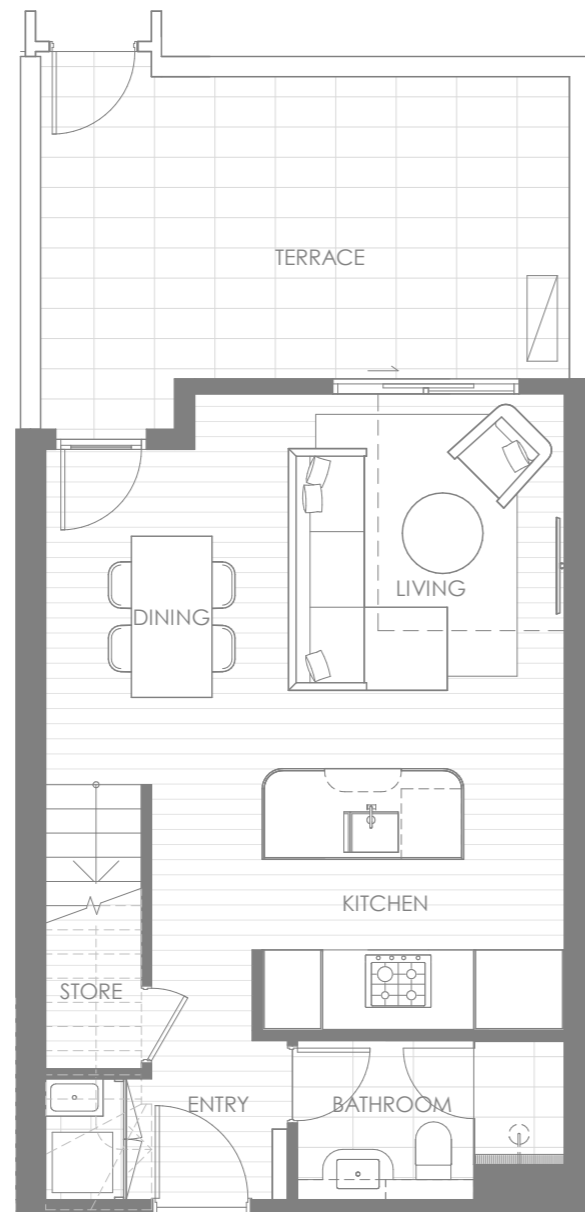
PRIVATE STORAGE
PRIVATE ENTRY
PRIVATE GARDEN

BABYLON
41 TERRY ROAD, ROUSE HILL
WWW.BABYLON.SYDNEY

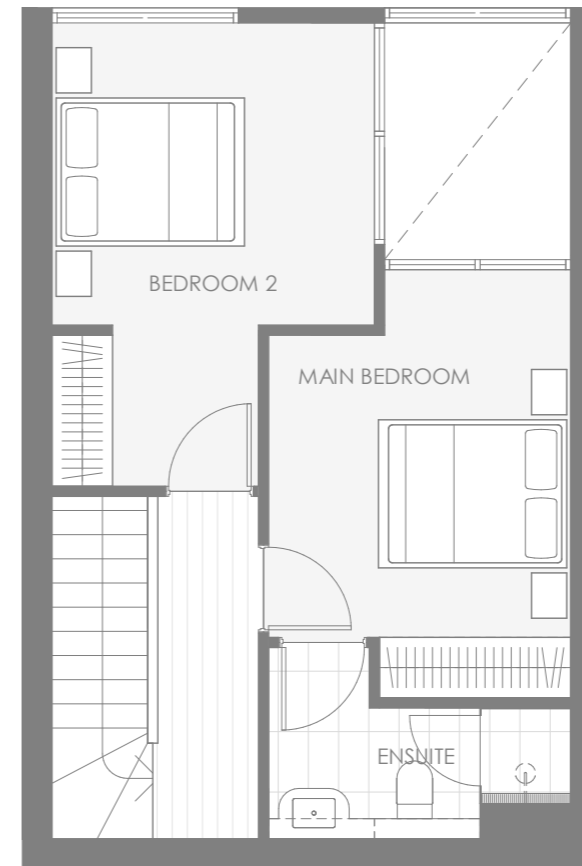
DEVELOPED BY DENVELL GROUP
DESIGNED BY ROTHELOWMAN
LANDSCAPE BY TURF DESIGN

BABYLON

SALES GALLERY
1300 899 866
SHOP 6 409 VICTORIA AVE
CHATSWOOD



LOWER FLOOR



UPPER FLOOR

