



THE PARKSIDE

MACQUARIE PARK

A

VIMG LUXURY
COLLECTION



W E L C O M E

AN ESCAPE IN THE CITY.
A SANCTUARY AMONGST
THE TREES. A PLACE WHERE
COMMUNITY IS FOSTERED.

WHERE NEW LIFE GROWS



Home isn't just a place. It's a feeling. The Parkside is a place to breathe deeply, to feel connected and inspired. An address that transports you to a world of tranquility and wellbeing, just moments from the urban bustle.

THE PARKSIDE

SHOPPING & DINING

Macquarie Centre	6 mins
Woolworths Macquarie Centre	6 mins
Chefs Gallery Macquarie	6 mins
The Panda Yum Cha	6 mins
Eden Gardens Nursery	10 mins
Westfield Chatswood	19 mins
Chatswood Chase	20 mins

TRANSPORT

Macquarie University Railway Station	4 mins
M2 Motorway Entry	7 mins
Lane Cove Ferry Wharf	21 mins
Sydney Airport (via M1)	30 mins
Western Sydney Airport	40 mins

MEDICAL

Macquarie Hospital	5 mins
Macquarie University Hospital	7 mins
WiSE Specialist Emergency Clinic	7 mins
Ryde Emergency Hospital	7 mins

EDUCATION

Macquarie University	4 mins
Epping Boys High School	6 mins
Arden Anglican School	7 mins
North Ryde Public School	8 mins
Truscott's Public School	8 mins
Ryde East Public School	10 mins
Ryde Secondary College	12 mins
St Josephs College	17 mins
Marist College	18 mins
Pymble Ladies College	18 mins
Knox Grammar	19 mins
Ku-ring-gai Creative Arts High School	24 mins

EMPLOYMENT

Macquarie Technology Park	6 mins
Macquarie Business Park	10 mins
Lane Cove Business Park	13 mins
Chatswood	15 mins
North Sydney	23 mins
Parramatta	22 mins

SPORTS & LEISURE

Macquarie University Art Gallery	3 mins
Elouera Reserve	4 mins
Wilga Park	5 mins
Macquarie Ice Rink	5 mins
Macquarie University Aquatic & Sports Centre	5 mins
Macquarie University Golf Driving Range	5 mins
Christie Park Football Facility	7 mins
Ryde Community Sports Centre	7 mins
Lane Cove National Park	8 mins
North Ryde Golf Club	9 mins
Sydney Olympic Park	22 mins
Balmoral Beach	24 mins



MACQUARIE PARK

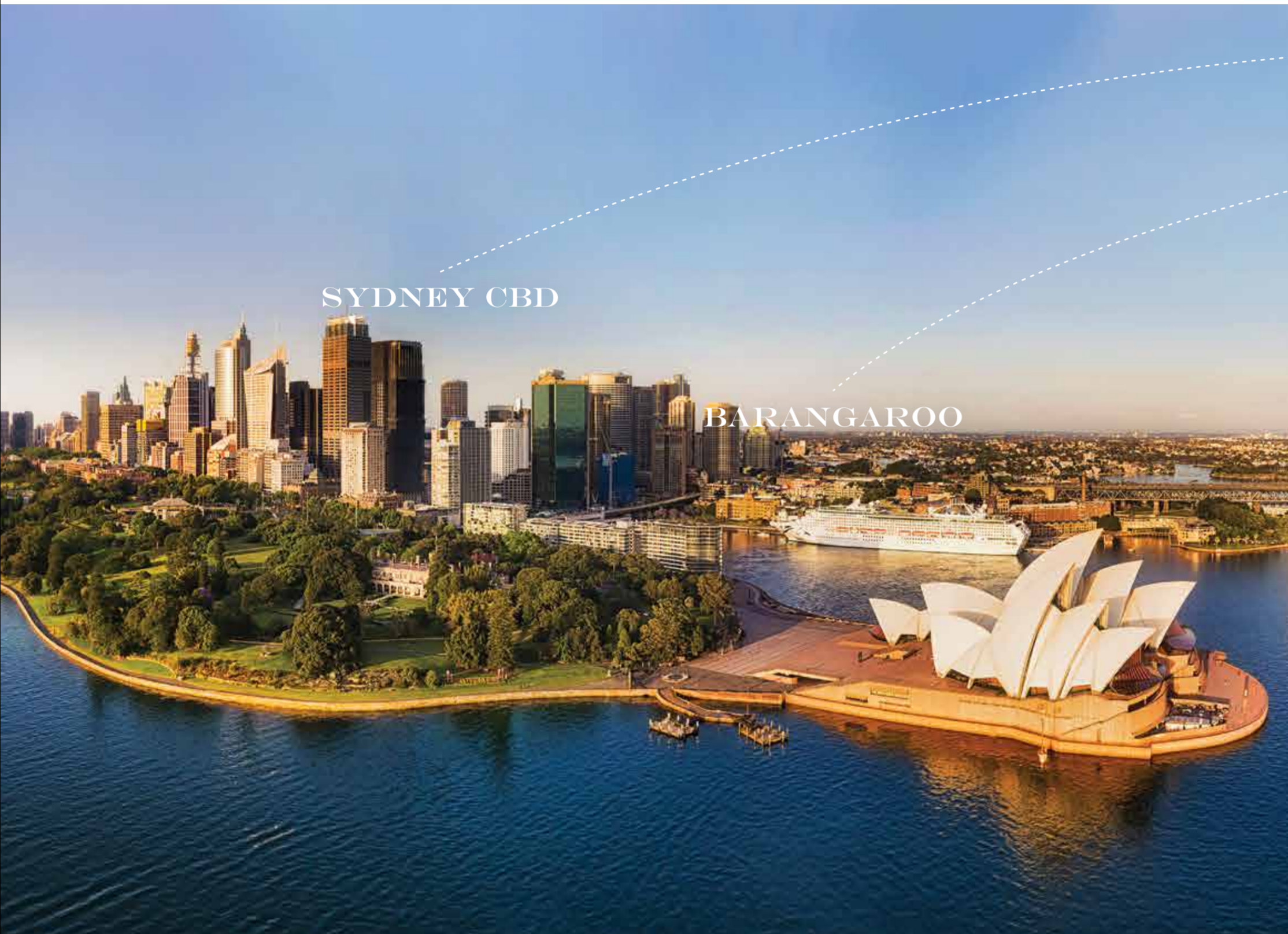
Live in one of the most dynamic suburbs in Sydney today. As the chosen location of corporate headquarters for many multinational companies, Macquarie University campus and hospital, Macquarie Park Shopping Centre and being on the Upper North Shore and moments from Lane Cove National Park, the residents will enjoy breathtaking views of the natural splendour.

Conveniently located with easy access to transport, destination dining and shopping precincts, world-class education and one of Australia's largest and most influential business and technology hubs – Macquarie Park boosts an abundance of amenity and connectivity.

LIVE CONNECTED

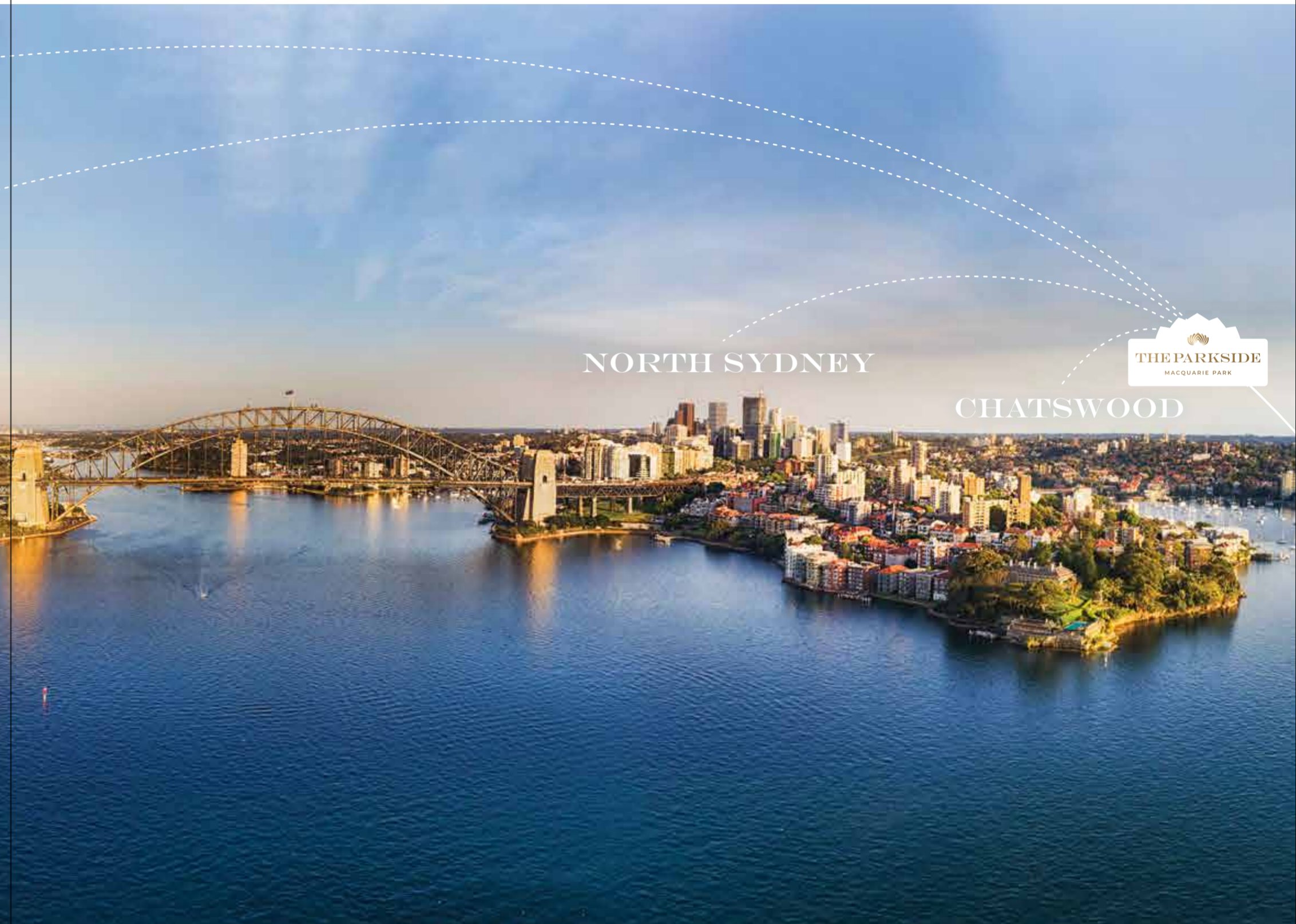
Macquarie Park is a well-connected North Shore suburb, only 14km from Sydney CBD. It hosts a magnetic mix of shopping, education, health, business to its impressive transport options.

With the future metro travel times to favourite destinations, such as the Sydney CBD, Barangaroo and Chatswood, set to be reduced in the coming years by the new Metro, you will keep in touch with all the places you need and all the things you love.



SYDNEY CBD

BARANGAROO



NORTH SYDNEY

CHATSWOOD



SYDNEY CBD



20 MINS VIA FUTURE SYDNEY METRO
(Martin Place Station set to open 2024)

44 MINS VIA SYDNEY TRAINS

BARANGAROO



17 MINS VIA FUTURE SYDNEY METRO
(Barangaroo Station set to open 2024)

38 MINS VIA SYDNEY TRAINS

NORTH SYDNEY



12 MINS VIA FUTURE SYDNEY METRO
(Crows Nest Station set to open 2024)

26 MINS VIA SYDNEY TRAINS

CHATSWOOD



5 MINS VIA SYDNEY METRO
7 MINS VIA SYDNEY TRAINS



EXTERNAL VIEW OF THE PARKSIDE LOOKING BACK TOWARDS SYDNEY CBD

Artist's Impression

LIFE ELEVATED

It's a view that will always bring a sense of peace at the end of the day.
Far-reaching vistas stretch over the tree canopies to the famous
Sydney CBD skyline, Sydney Harbour, and around to the sweeping
majesty of Lane Cove National Park.

“ WE SOUGHT TO CREATE A PLACE THAT HARNESSSES THE NATURAL ENVIRONMENT AND WHERE THE HOMES SEEM TO FLOAT AMONGST THE TREETOPS – SPACES THAT RAISE THE SPIRITS AND LET YOU FOCUS ON THE THINGS THAT MATTER TO YOU MOST. ”

— NICHOLAS BYRNE,
DIRECTOR, DKO

Created by award-winning architects, DKO, The Parkside's cutting-edge design raises the bar bringing together stunning modern architecture, innovative smart-home tech and oasis-like spaces in one extraordinary address.

The buildings sit naturally within the environment, apartments are oriented to draw in the views, while interiors pay homage to the native flora and local landscapes. The team has meticulously considered the qualities of space, light, form and function to produce elegant and timeless contemporary homes.



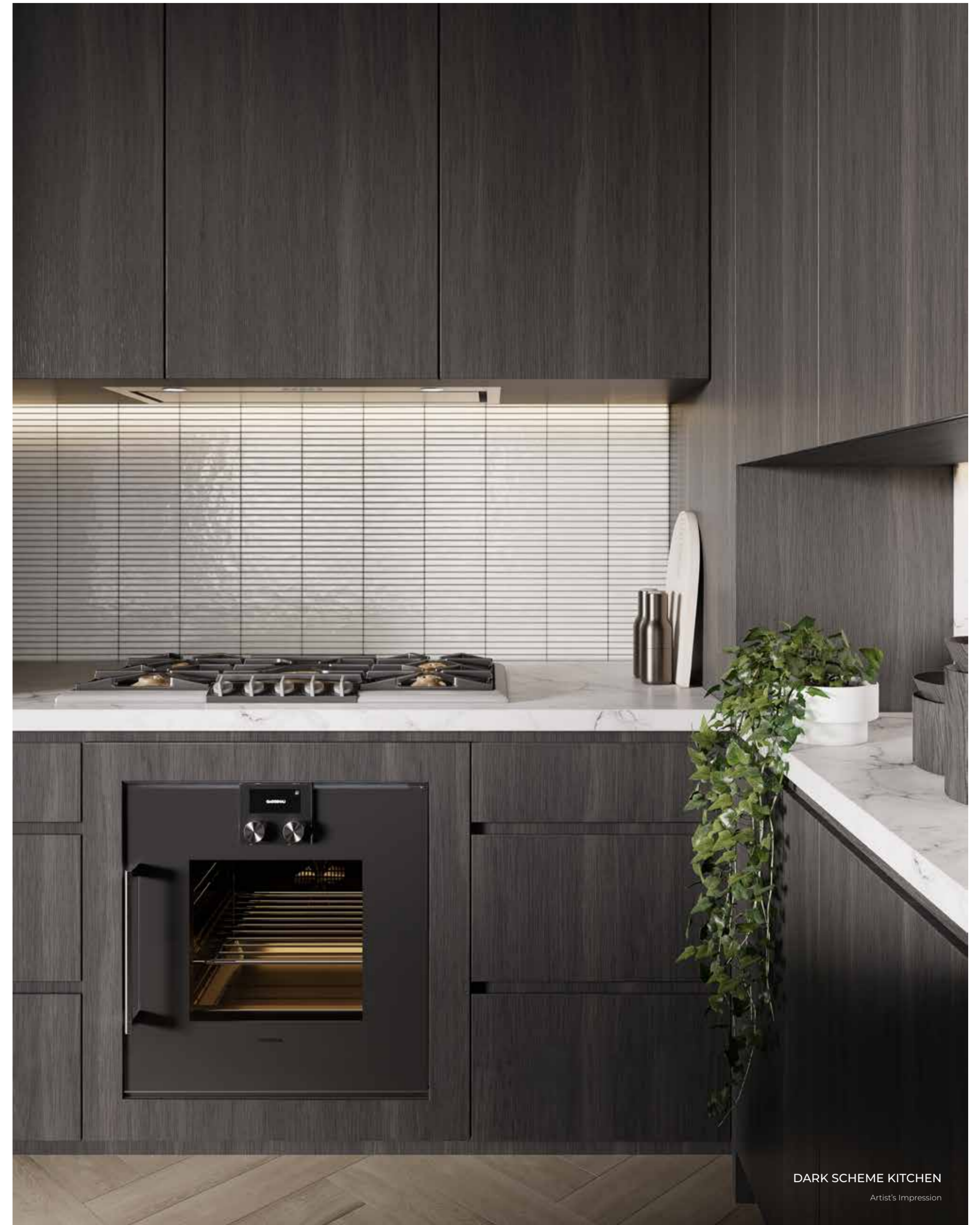
EXTERIOR VIEW FROM EPPING ROAD
Artist's Impression

LUXURIOUS LIVING

A
VIMG LUXURY
COLLECTION

LUXURY FINISHES

Your three or four-bedroom apartment features enhanced liveability and added luxury touches including a full suite of high-performance Gaggenau kitchen appliances and the latest in home automation, communications and lighting control.



DARK SCHEME KITCHEN
Artist's Impression



DARK SCHEME KITCHEN
Artist's Impression

LUXURY FINISHES

Your three or four-bedroom apartment features enhanced liveability and added luxury touches including a full suite of high-performance Gaggenau kitchen appliances and the latest in home automation, communications and lighting control.



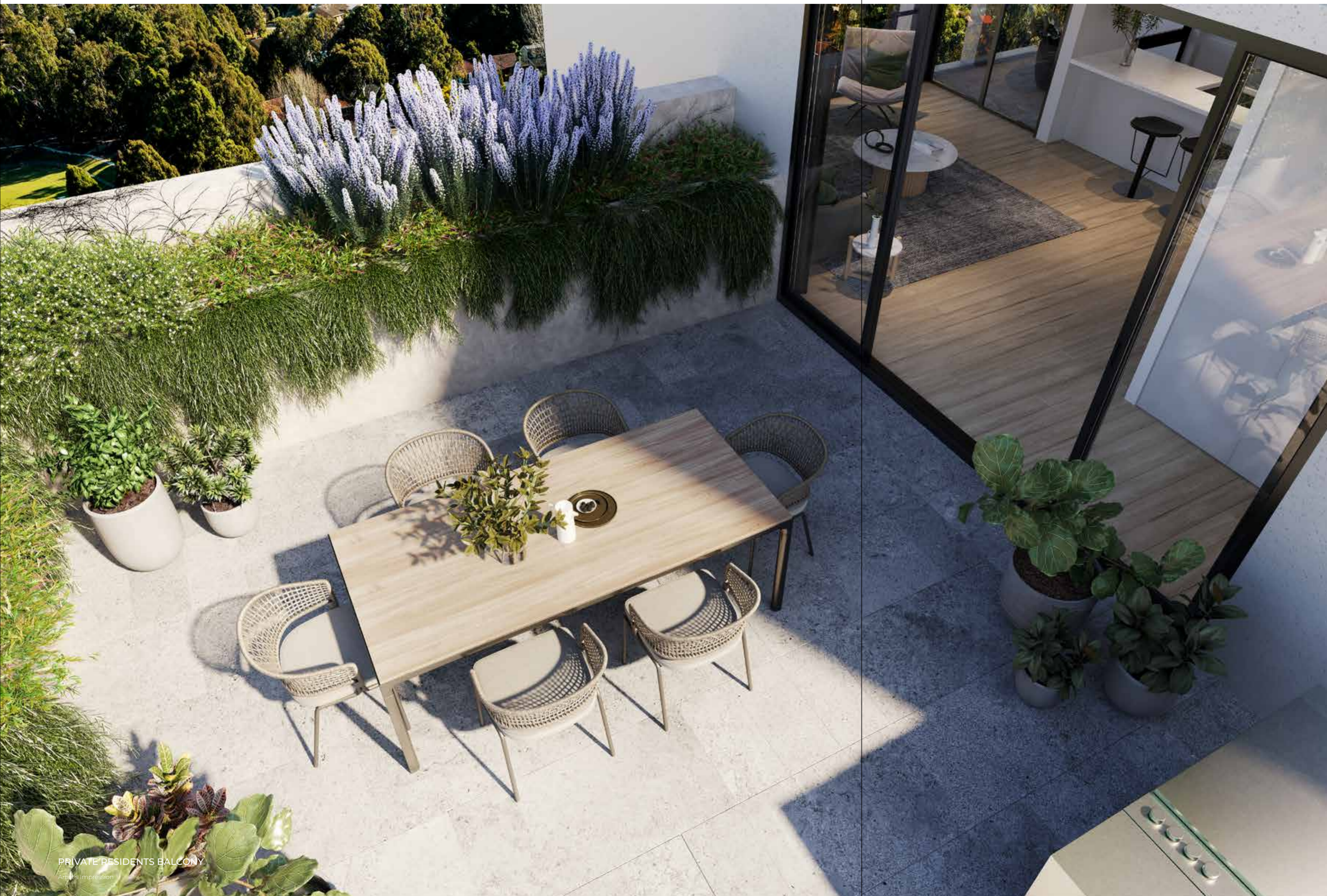
DARK SCHEME KITCHEN
Artist's Impression



DARK SCHEME KITCHEN
Artist's Impression



BATHROOM
Artist's Impression

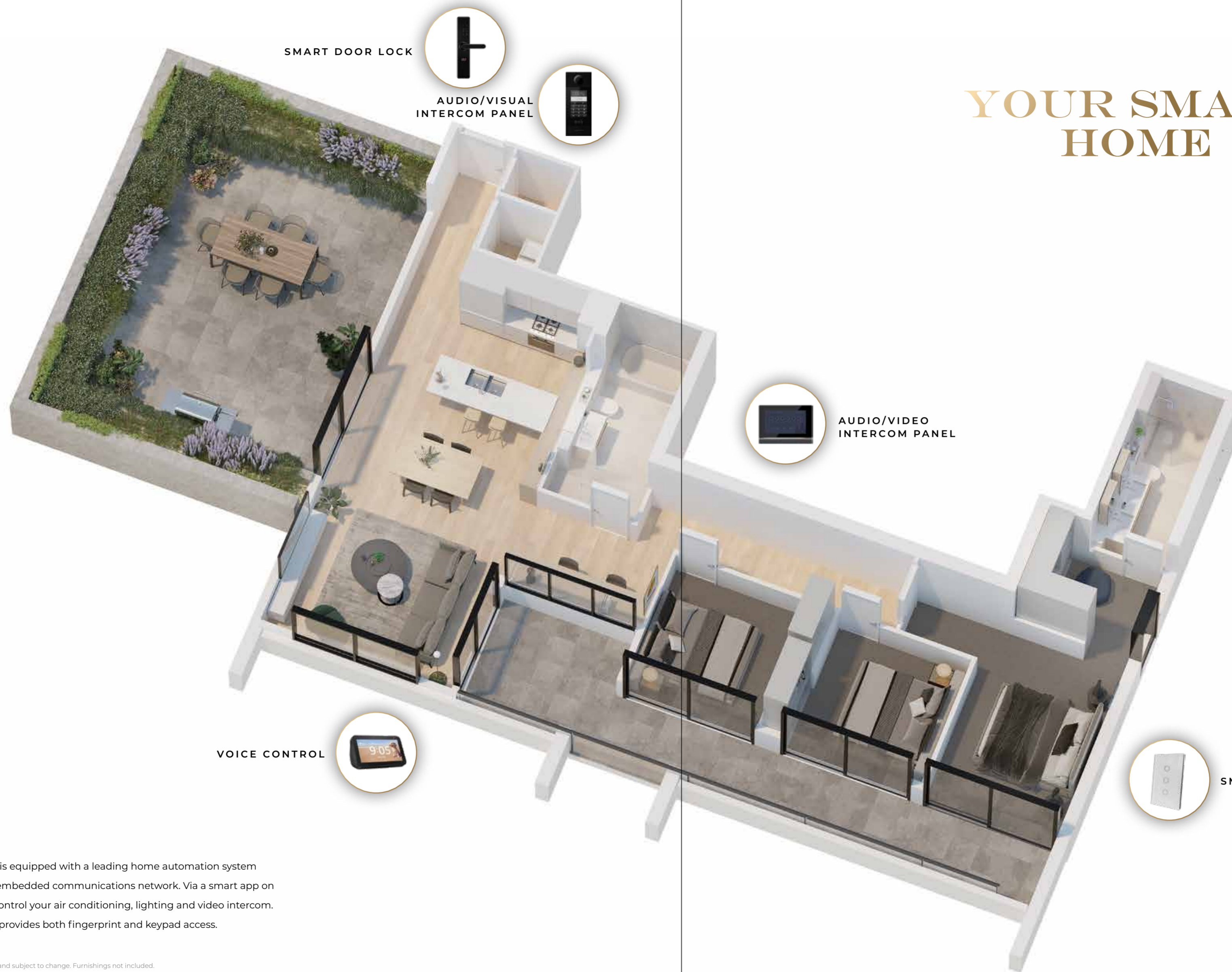


PRIVATE RESIDENTS BALCONY

Artistic Impression

ALFRESCO LIVING

Ground floor residences enjoy lavish generous terraces, while upper-level residences feature private loggia-style balconies with sweeping views. Find peace above the pace of city living. Where magical vistas are interwoven with the natural world.



SMART DOOR LOCK



AUDIO/VISUAL INTERCOM PANEL



YOUR SMART HOME



AUDIO/VIDEO INTERCOM PANEL

VOICE CONTROL



SMART LIGHTING PANEL

Your smart apartment is equipped with a leading home automation system and a state-of-the-art embedded communications network. Via a smart app on your tablet or phone, control your air conditioning, lighting and video intercom. A smart door lock also provides both fingerprint and keypad access.

Artist's impression. Indicative only and subject to change. Furnishings not included.

WELLNESS FROM WITHIN



RESIDENTS YOGA ROOM
Artist's Impression

THE PARKSIDE



COURTYARD WATER FEATURE
Artist's Impression



WELLNESS



RESIDENTS YOGA ROOM
Artist's Impression

“ WE’RE CREATING A LANDSCAPE THAT HONOURS RESIDENTIAL LIFE. A LUSH, GREEN, COMMUNAL SANCTUARY IN WHICH A SENSE OF NEIGHBOURHOOD CAN GROW AND WHERE PEOPLE WILL FEEL GOOD ABOUT BEING. ”

— MATT COGGAN,
DIRECTOR, TURF DESIGN STUDIO



RESIDENTS BBQ AREA
Arup's Impression

LIVE GROW THRIVE

Enter an oasis where the scent of eucalyptus and jasmine fills the air with a stunning central water feature. This expansive courtyard garden is the ultimate secret garden, a forest-like haven complete with BBQ and sheltered dining areas. A source of inner regeneration within an urban setting. At the courtyard's edge, you will find a yoga area, residents dining/lounge and library spaces. Somewhere to clear your mind, re-energise, socialise, entertain, work and connect.



COURTYARD GARDEN AND CHILDRENS WATERPLAY AREA
Artist's impression



Ranked in the top 1% of universities in the world, neighbouring Macquarie University is just 450 metres from home offering students and leading researchers some of the most advanced facilities in Australia. The university draws on its unique location in the heart of Australia's largest hightech precinct surrounded by breathtaking bushland, lakes and lawns.

A SMART CHOICE



WORLD LEADING EDUCATION

(QS World University Rankings, 2020)

SCHOOLS

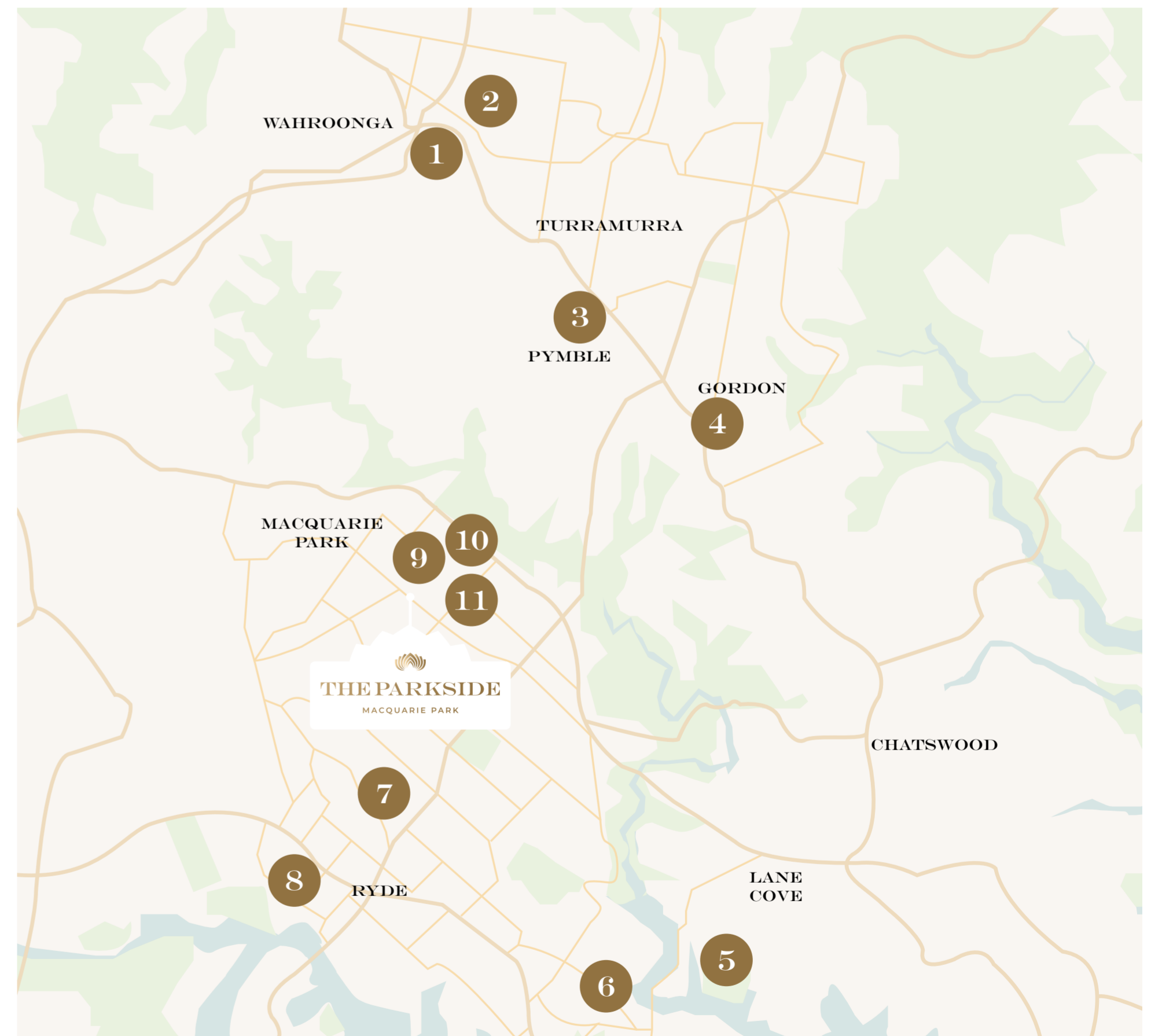
- 1 Abbotsleigh School
- 2 Knox Grammar
- 3 Pymble Ladies College
- 4 Ravenswood
- 5 Saint Ignatius Riverview
- 6 St Joseph's College

TAFE

- 7 TAFE NSW - Ryde
- 8 TAFE NSW - Meadowbank

UNIVERSITIES

- 9 Macquarie University
- 10 Macquarie Graduate School of Management
- 11 Australian School of Advance Medicine





A RETAIL HAVEN



A style capital for designer labels and luxury brands and home to a thriving gourmet dining scene. Nearby, the vibrancy and energy of Macquarie Centre always tempts with its day-night destination dining, cafes, health offerings, fresh food precinct, entertainment and prestige stores. For a change of scenery, bustling retail at Chatswood and Sydney CBD are also close by.

THE PARKSIDE



For fashionistas, gleaming retail windows and beautiful boutiques house a constellation of chic labels and global luxury brands from Scanlan Theodore and Gorman to Swarovski and Chanel.



DESTINATION



Macquarie Centre is a magnet for new restaurant concepts, casual eateries and Australia's top chefs with its buzzy international dining precinct home to culinary icons such as Bondi Pizza, award winning Chefs Gallery, District 1 HCMC, Asakaze, Chatime and more, plus two convenient major supermarkets - Coles and Woolworths.



IN THE HEART OF NATURE





LANE COVE NATIONAL PARK



LANE COVE GOLF COURSE



LANE COVE NATIONAL PARK



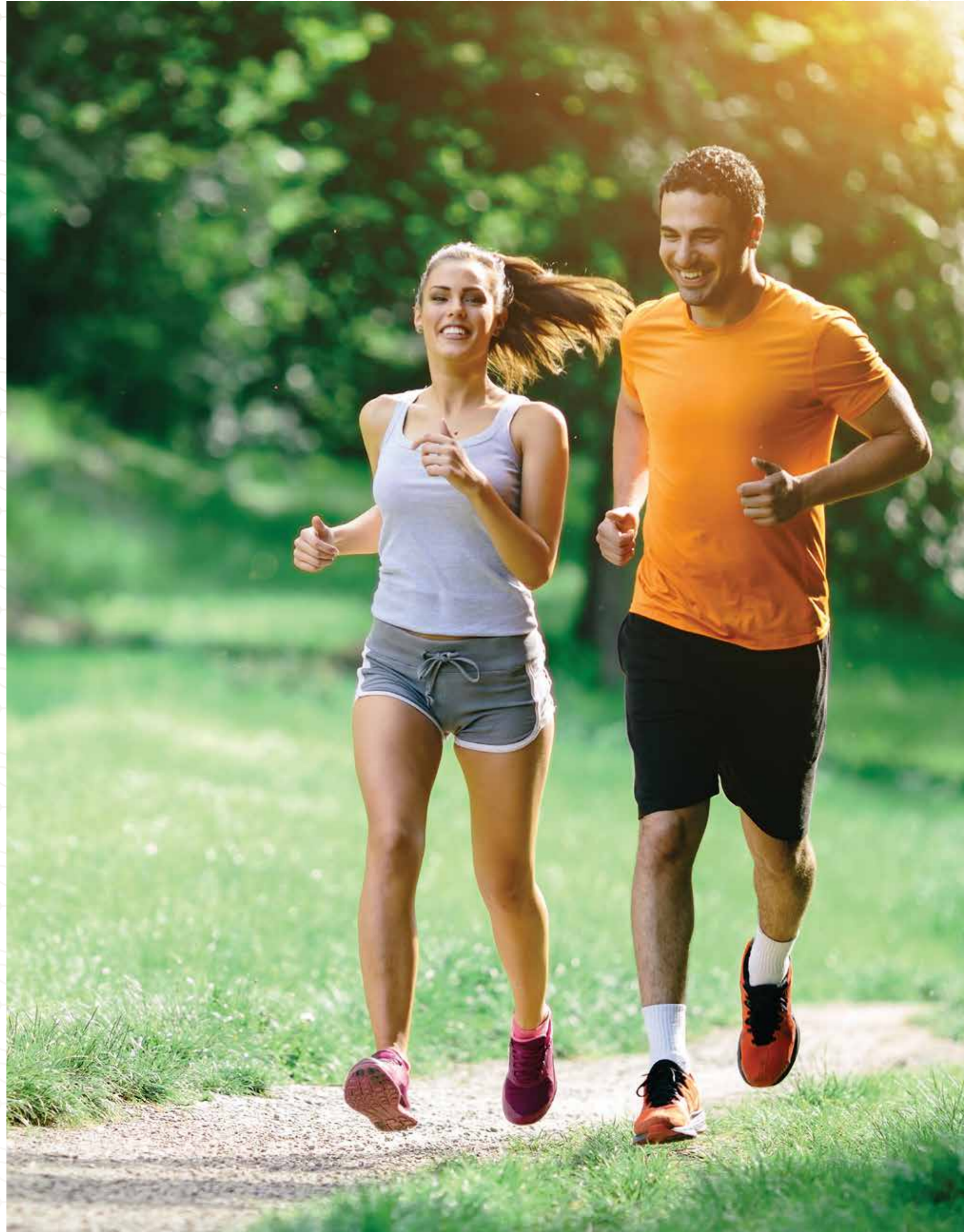
NATURE

LIVE AN URBAN LIFESTYLE
IN HARMONY WITH NATURE.

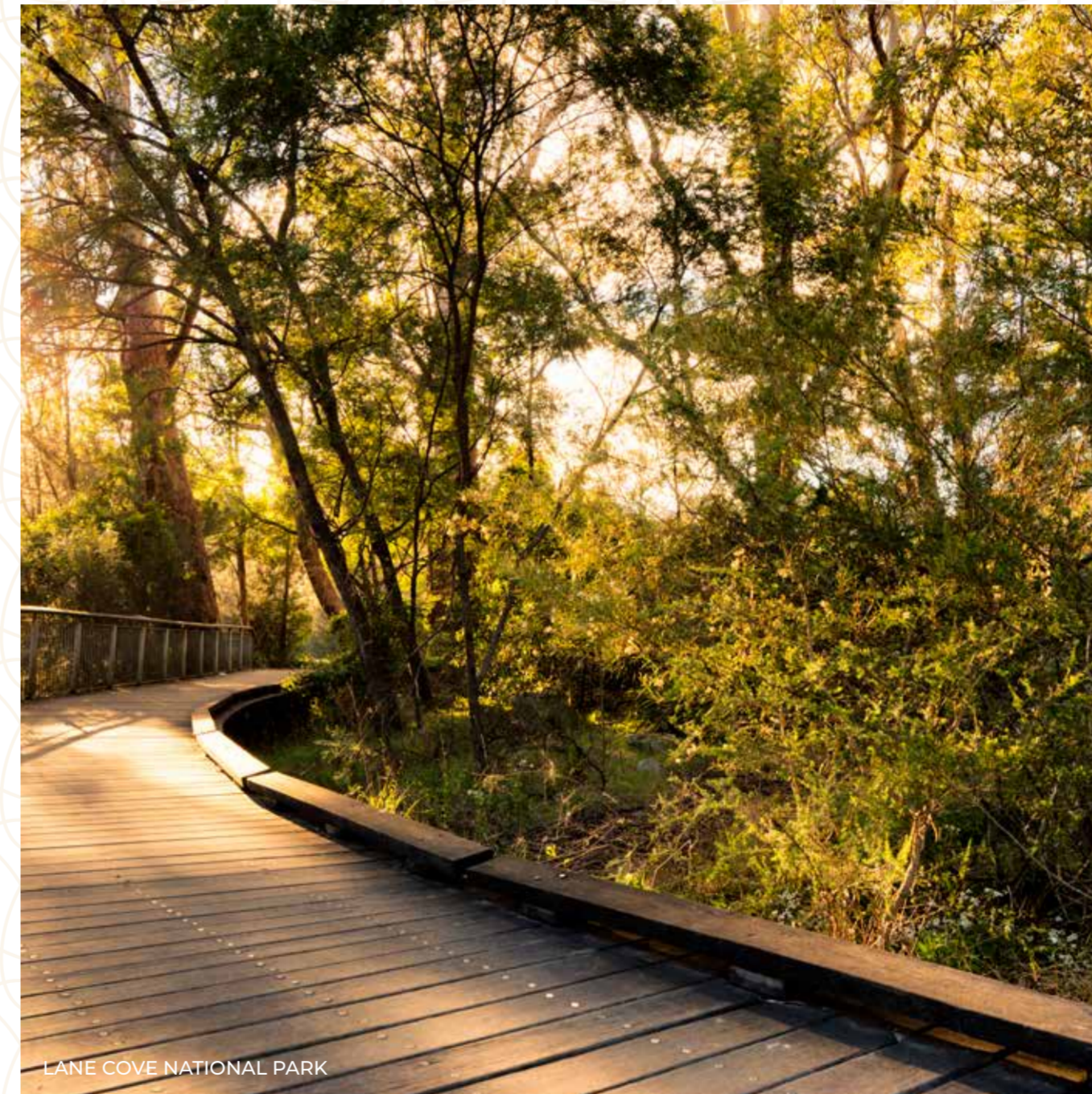
NATURALLY CONNECTED



Find yourself in a place where life just flows and closeness to nature
renews the soul. Seek serenity in magnificent Lane Cove National Park and
the winding waterways that kiss the edges of your Macquarie Park home
– a haven for bushwalkers, kayakers and picnickers.



Lane Cove National Park's recreational trails and meandering river bring nature right to your door. Enjoy exploring the historic sites along the Heritage walk or enjoy a picnic, canoe or go birdwatching the choice is yours.



LANE COVE NATIONAL PARK



THE PARKSIDE TEAM



VIMG is a leading property and asset management company, with extensive experience across residential, commercial and industrial sectors. Throughout our history, VIMG has built a reputation for delivering luxurious, contemporary properties in Australia. Primarily located in Sydney, Melbourne and Brisbane, VIMG has exposure to the finest and most affluent cities in Australia complementing our resolute commitment to quality, amenity and design.

VIMG partners with world renowned artists, architects and designers to bring luxury sophistication and art to every project.

Each acquisition is strategic in ensuring no compromise is made on location, amenity or design. We welcome you to our community knowing our properties will not only provide an outstanding lifestyle, but also a legacy for future generations.

VIMG.COM.AU



DKO Architecture is one of Australia's leading innovative design practices specialising in Urban Design, Architecture and Interior Design. Established in 2000, the practice, with offices in Melbourne and Sydney, and with staff in excess of 70 personnel, has developed its reputation from extensive experience in the exploration of residential design.

Undertaking projects throughout Australia, New Zealand and South East Asia, DKO Architecture is highly regarded and awarded in all areas of architecture. All their buildings are considered with the inhabitant, as well as the environment in mind. They analyse how people live and use that knowledge to inform their design.

DKO.COM.AU



Webber Design is a Structural Engineering practice with offices in Sydney, Melbourne and Perth providing design services to the construction and development industry in Australia. Specialising in major projects Webber Design delivers a hands on, back to basics philosophy with affordable cost effective designs and a high standard of personalized service. Since commencing operations in 2007, Webber Design has developed a reputation for cost effective Value Engineered alternative design solutions and have been commissioned on projects of a total value in excess of \$22 Billion on a variety of Residential, Institutional, Community, Commercial, Retail and Health projects ranging from luxury homes to high rise buildings.

Webber Design is a young enthusiastic business with a can do attitude and employs over 55 talented individuals, Engineers and Draftspersons making us one of the largest privately owned Structural Engineering practices in Australia.

WEBBERDESIGN.COM



Alliance Project Group is an award-winning construction company that is committed to delivering a comprehensive range of design & construction services whilst providing innovative project solutions.

With over 100 years of combined executive experience in the industry, Alliance brings substantial building & construction expertise and knowledge to each project that it delivers. Their impeccable delivery record demonstrates the strength of their teams, their emphasis on company culture and the reinforcement of excellence in everything they do.

To date, Alliance has successfully delivered a multitude of projects, totalling more than half a billion dollars. Client satisfaction is their ultimate goal, achieved by building communities and delivering quality.

ALLIANCEPROJECTGROUP.COM.AU



Turf Design Studio is an experienced and dynamic design practice specialising in landscape architecture, urban horticulture and ecological design. The practice focuses on creating meaningful places that improve the environment and make a difference to the quality of community life.

Turf understands the complexities of large-scale projects and knows what it takes to integrate often-competing objectives into a coherent, meaningful and achievable vision.

TURFDESIGN.COM



With over \$9 Billion in residential projects managed nationally and 1.5 Million sqm of net saleable area, PDS Group are an industry leader in residential development and project management.

Their team is highly experienced in delivering positive and successful outcomes for their residential clients. PDS Group have deep and strong networks with stakeholders and are actively engaged in the current trends and requirements of residential occupants and owners.

PDSGROUP.COM.AU

THE PARKSIDE

A TRANQUIL ESCAPE IN THE CITY

Disclaimer: Colliers International does not guarantee, warrant or represent that the information contained in this advertising and marketing document is current, accurate, reliable or complete. You should make your own enquiries, including obtaining independent professional advice to determine your personal circumstances. Alternatively, we may refer you to any owner of any property we represent for you to conduct your own enquiries. We exclude all inferred or implied terms, conditions and warranties arising out of this document and any liability for loss or damage arising there from.

THEPARKSIDE.COM.AU

