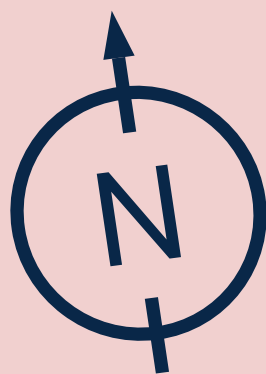
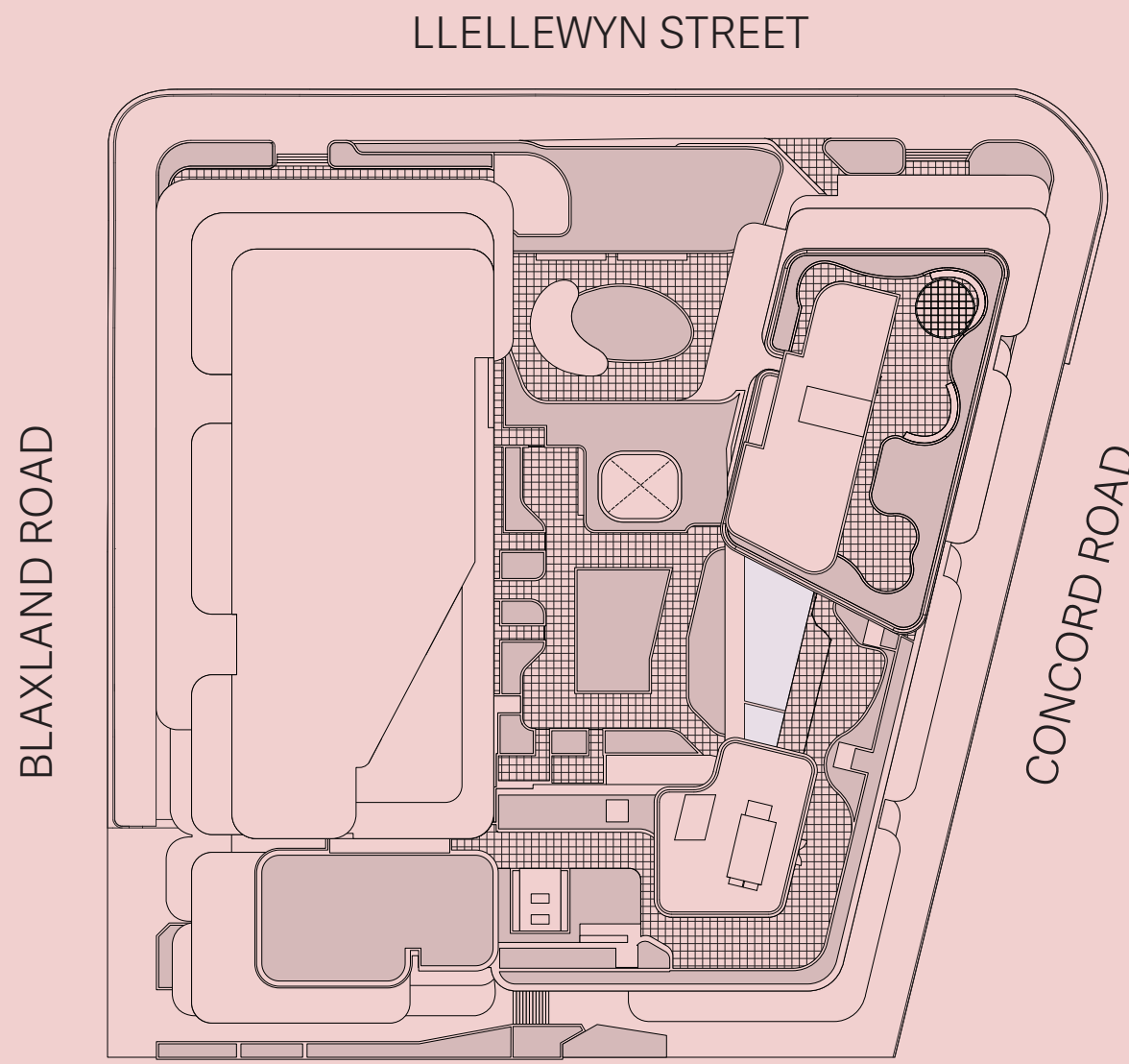


BAIA

RESIDENCES

LOWER GROUND

- Commercial
- Retail
- One Bed
- One Bed + MPR
- Two Bedroom
- Two Bed + MPR
- Three Bedroom
- Four Bedroom



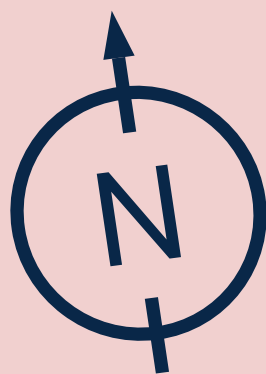
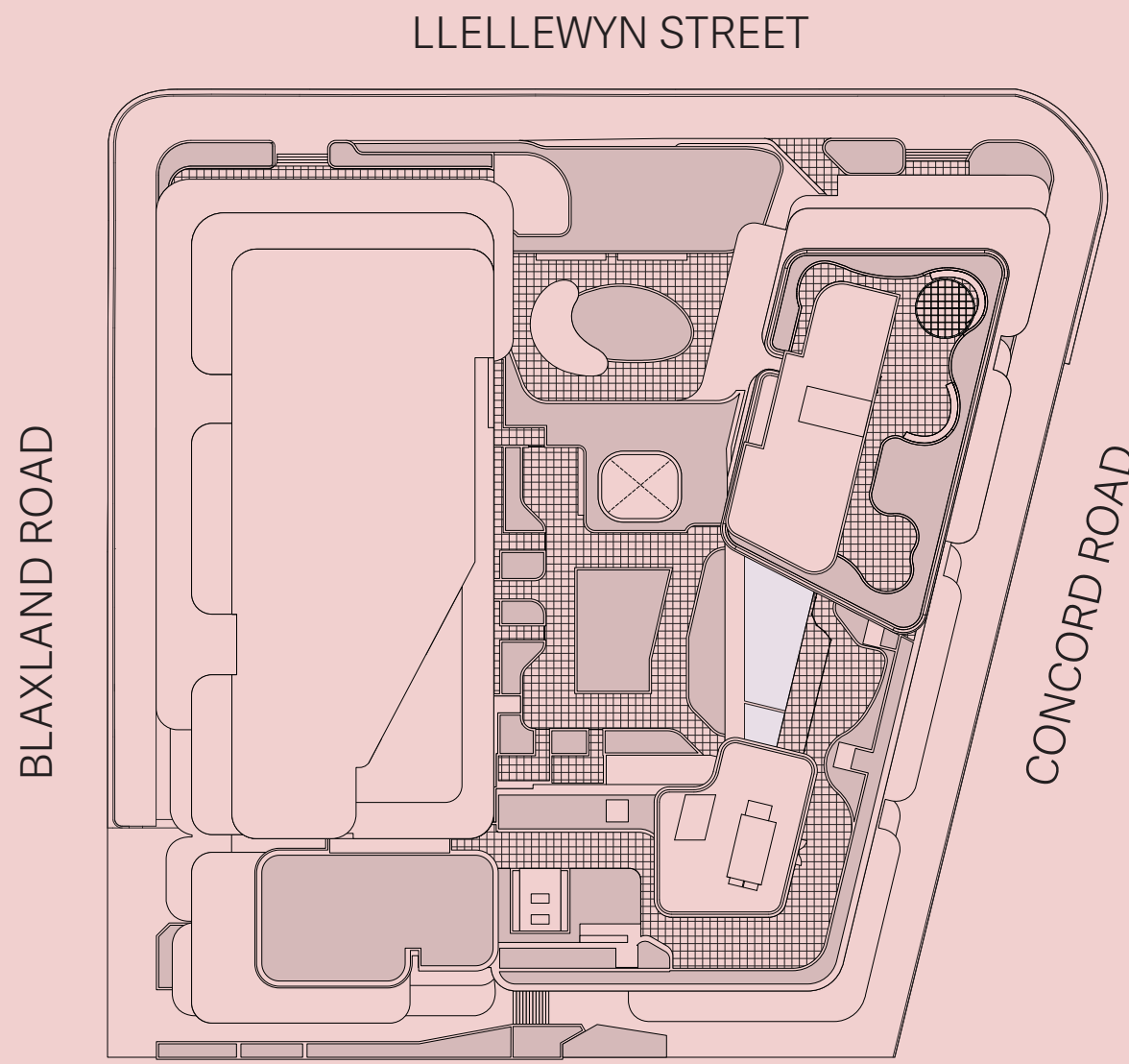
DISCLAIMER: Purchasers take note: These floor plans do not form part of the contract for sale of any lot within the development. They are indicative only. The descriptions, layouts and areas set out in this floor plan are subject to change and may not accurately reflect the final design of each unit depicted.

BAIA

RESIDENCES

UPPER GROUND

- One Bed
- One Bed + MPR
- Two Bedroom
- Two Bed + MPR
- Three Bedroom
- Three Bedroom + MPR
- Four Bedroom



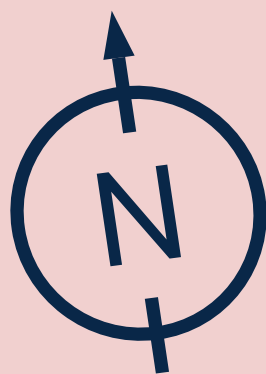
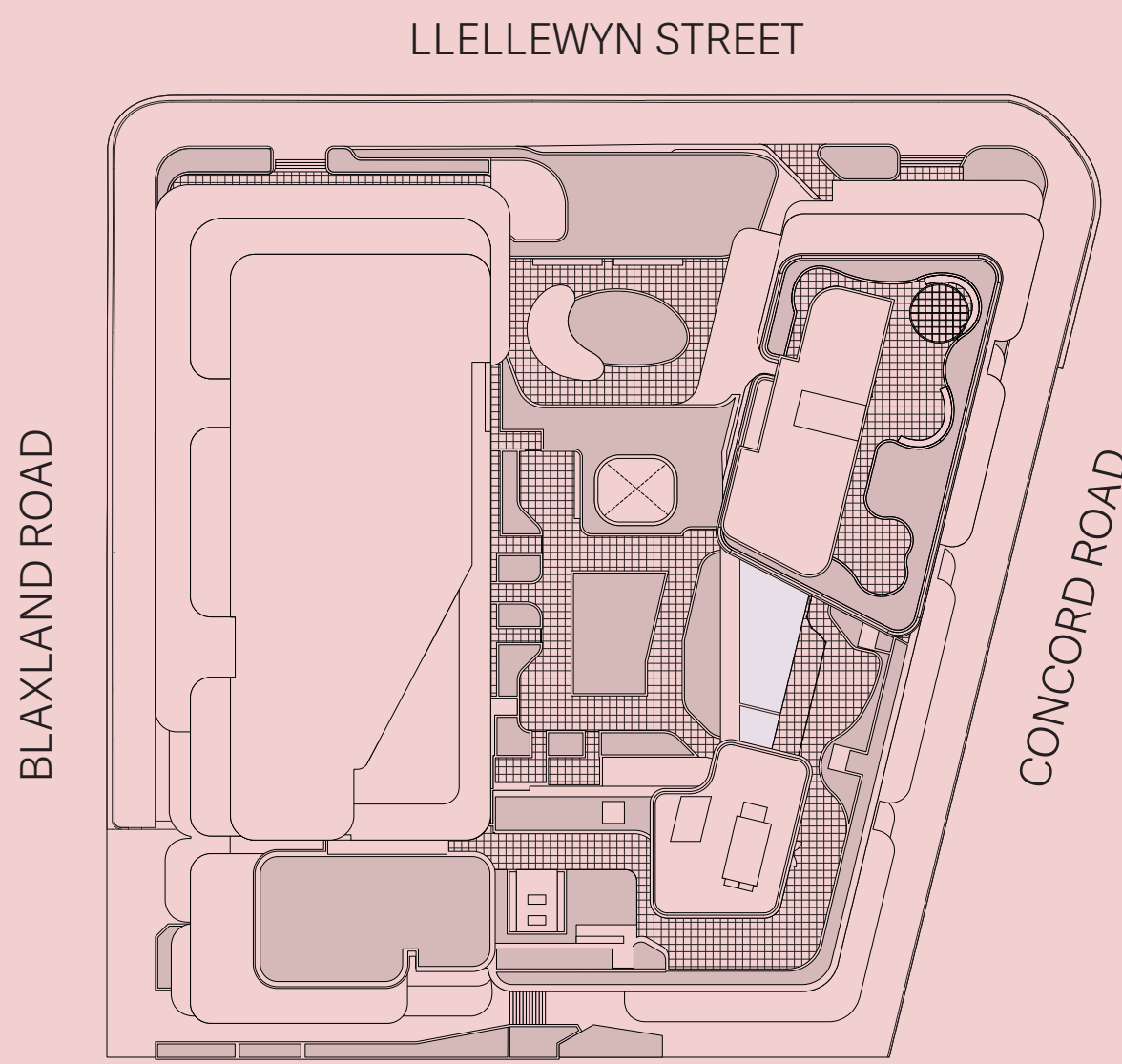
DISCLAIMER: Purchasers take note: These floor plans do not form part of the contract for sale of any lot within the development. They are indicative only. The descriptions, layouts and areas set out in this floor plan are subject to change and may not accurately reflect the final design of each unit depicted.

BAIA

RESIDENCES

LEVEL 1

- Retail
- One Bed
- One Bed + MPR
- Two Bedroom
- Two Bed + MPR
- Three Bedroom
- Three Bedroom + MPR
- Four Bedroom



REFER TO APARTMENT NUMBERS			
101			
Internal Area:	82 m ²		
External Area:	13 m ²		
Total Area:	94 m ²		
102			
Internal Area:	81 m ²		
External Area:	19 m ²		
Total Area:	100 m ²		
103			
Internal Area:	88 m ²		
External Area:	19 m ²		
Total Area:	107 m ²		
110			
Internal Area:	104 m ²		
External Area:	17 m ²		
Total Area:	121 m ²		
109			
Internal Area:	132 m ²		
External Area:	24 m ²		
Total Area:	156 m ²		



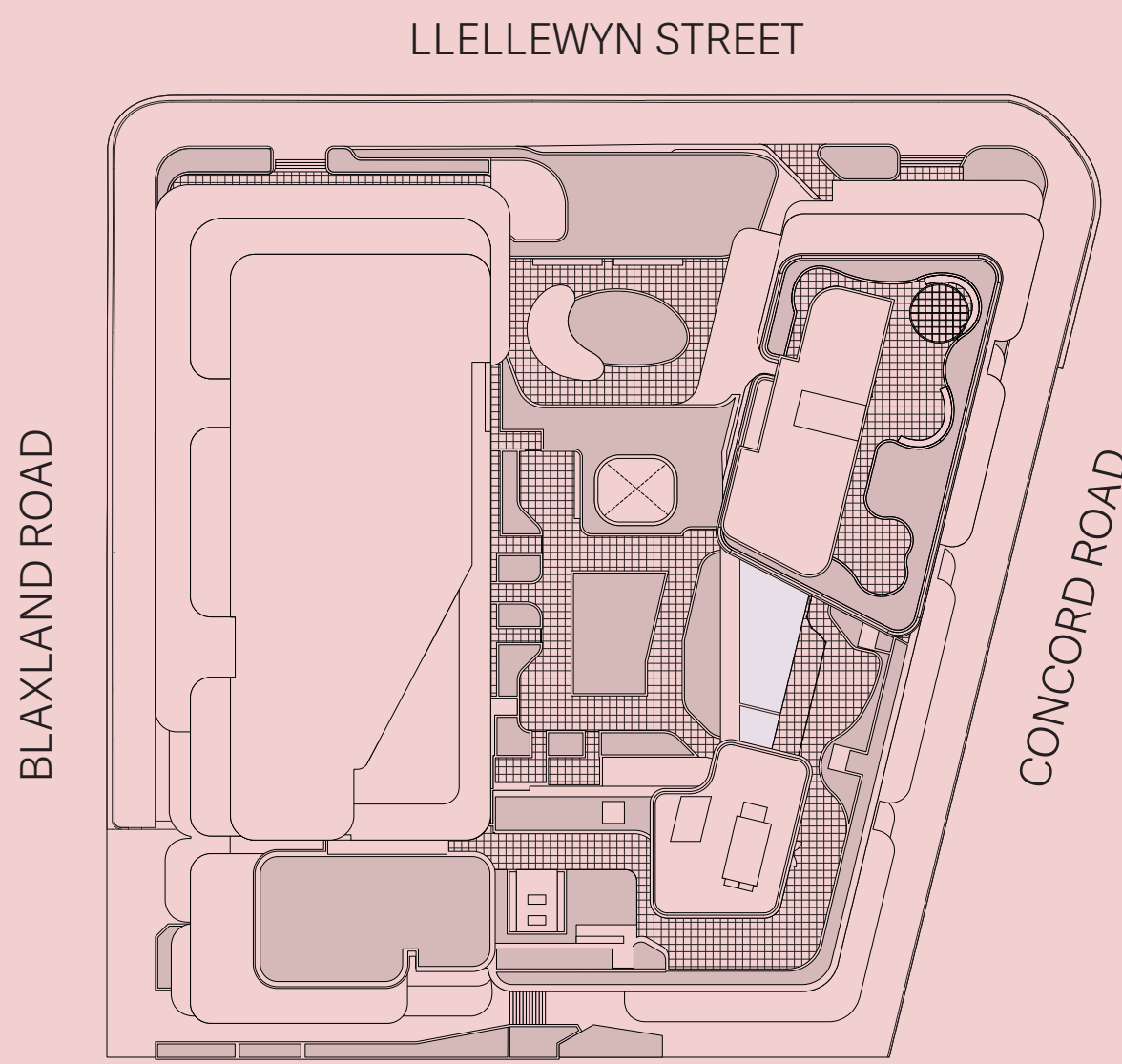
DISCLAIMER: Purchasers take note: These floor plans do not form part of the contract for sale of any lot within the development. They are indicative only. The descriptions, layouts and areas set out in this floor plan are subject to change and may not accurately reflect the final design of each unit depicted.

BAIA

RESIDENCES

LEVEL 2

- One Bed
- One Bed + MPR
- Two Bedroom
- Two Bed + MPR
- Three Bedroom
- Three Bedroom + MPR
- Four Bedroom



202	
Internal Area:	93 m ²
External Area:	10 m ²
Total Area:	103 m ²

201 ADAPTABLE	
Internal Area:	112 m ²
External Area:	12 m ²
Total Area:	124 m ²

215 ADAPTABLE	
Internal Area:	69 m ²
External Area:	8 m ²
Total Area:	77 m ²

214	
Internal Area:	77 m ²
External Area:	16 m ²
Total Area:	93 m ²

213	
Internal Area:	63 m ²
External Area:	8 m ²
Total Area:	71 m ²

212	
Internal Area:	59 m ²
External Area:	8 m ²
Total Area:	67 m ²

203	
Internal Area:	76 m ²
External Area:	10 m ²
Total Area:	86 m ²

204	
Internal Area:	98 m ²
External Area:	13 m ²
Total Area:	111 m ²

205	
Internal Area:	84 m ²
External Area:	12 m ²
Total Area:	96 m ²

206	
Internal Area:	83 m ²
External Area:	10 m ²
Total Area:	93 m ²

209	
Internal Area:	91 m ²
External Area:	10 m ²
Total Area:	101 m ²

REFER TO APARTMENT NUMBERS

210	
Internal Area:	67 m ²
External Area:	11 m ²
Total Area:	78 m ²

211	
Internal Area:	60 m ²
External Area:	13 m ²
Total Area:	73 m ²



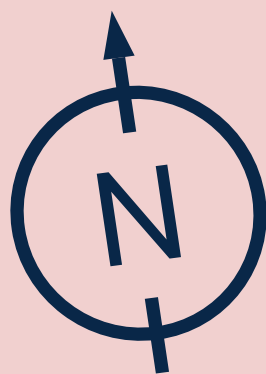
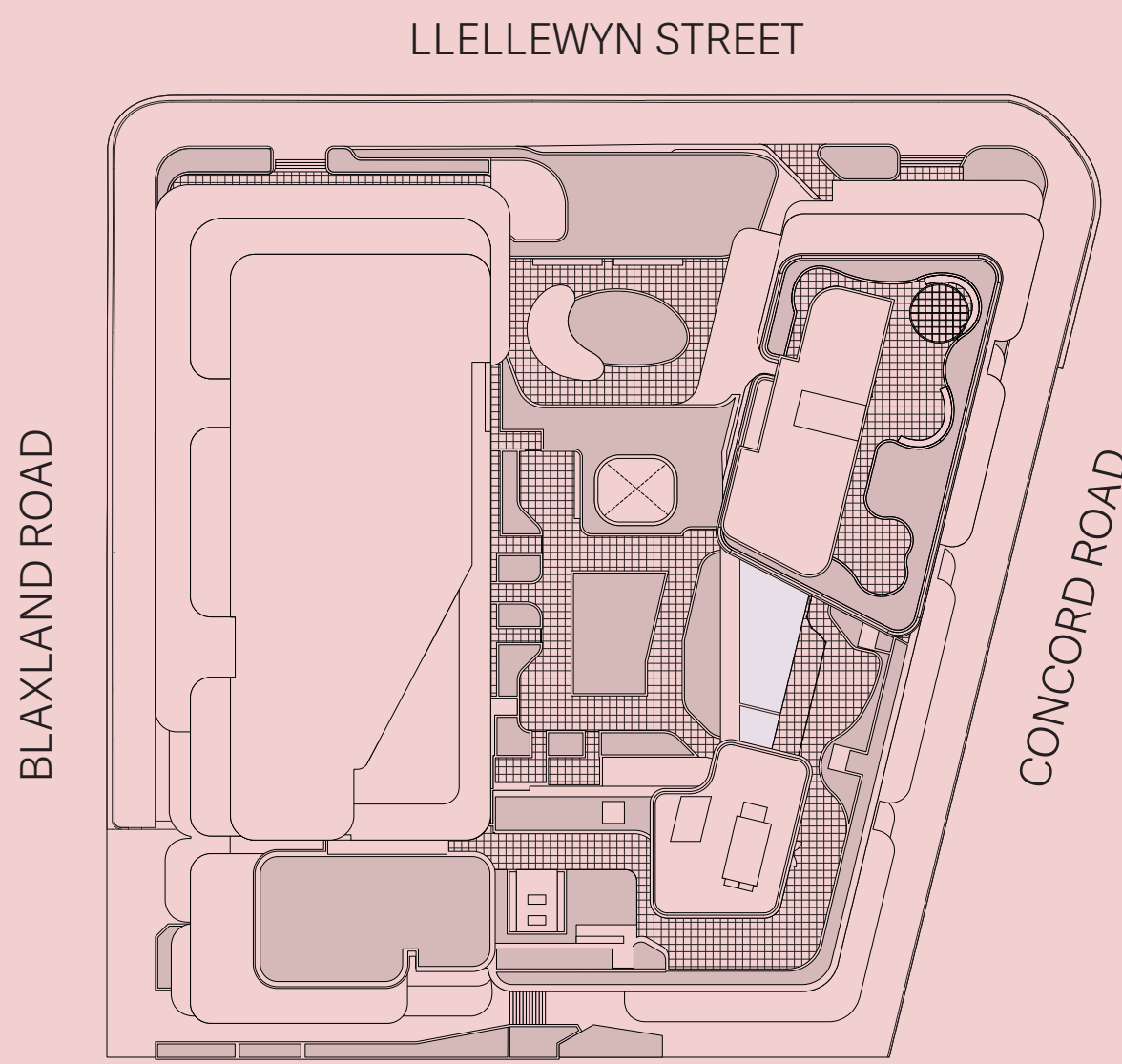
DISCLAIMER: Purchasers take note: These floor plans do not form part of the contract for sale of any lot within the development. They are indicative only. The descriptions, layouts and areas set out in this floor plan are subject to change and may not accurately reflect the final design of each unit depicted.

BAIA

RESIDENCES

LEVEL 3

- One Bed
- One Bed + MPR
- Two Bedroom
- Two Bed + MPR
- Three Bedroom
- Three Bedroom + MPR
- Four Bedroom



MERITON



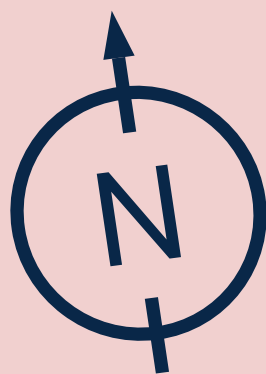
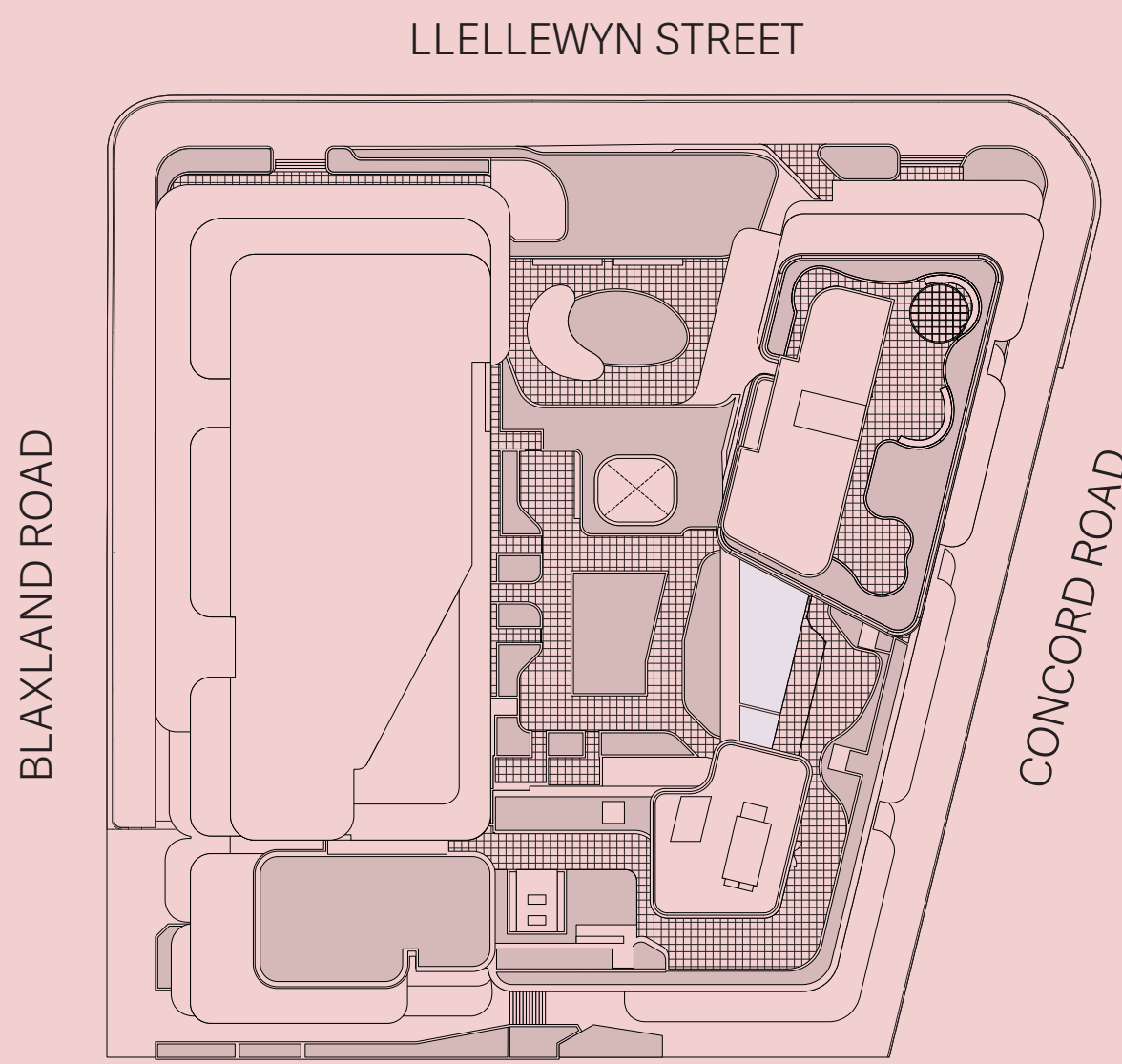
DISCLAIMER: Purchasers take note: These floor plans do not form part of the contract for sale of any lot within the development. They are indicative only. The descriptions, layouts and areas set out in this floor plan are subject to change and may not accurately reflect the final design of each unit depicted.

BAIA

RESIDENCES

LEVEL 4

- One Bed
- One Bed + MPR
- Two Bedroom
- Two Bed + MPR
- Three Bedroom
- Three Bedroom + MPR
- Four Bedroom



MERITON

402	
Internal Area:	93 m ²
External Area:	10 m ²
Total Area:	103 m ²

401	
Internal Area:	53 m ²
External Area:	32 m ²
Total Area:	85 m ²

412 ADAPTABLE	
Internal Area:	117 m ²
External Area:	45 m ²
Total Area:	162 m ²

411	
Internal Area:	103 m ²
External Area:	101 m ²
Total Area:	204 m ²

403	
Internal Area:	77 m ²
External Area:	10 m ²
Total Area:	87 m ²

404	
Internal Area:	97 m ²
External Area:	13 m ²
Total Area:	110 m ²

405	
Internal Area:	84 m ²
External Area:	12 m ²
Total Area:	96 m ²

406	
Internal Area:	84 m ²
External Area:	10 m ²
Total Area:	84 m ²

409	
Internal Area:	91 m ²
External Area:	10 m ²
Total Area:	101 m ²

410	
Internal Area:	60 m ²
External Area:	11 m ²
Total Area:	71 m ²



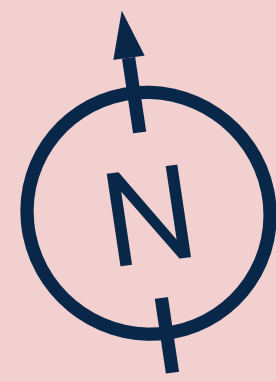
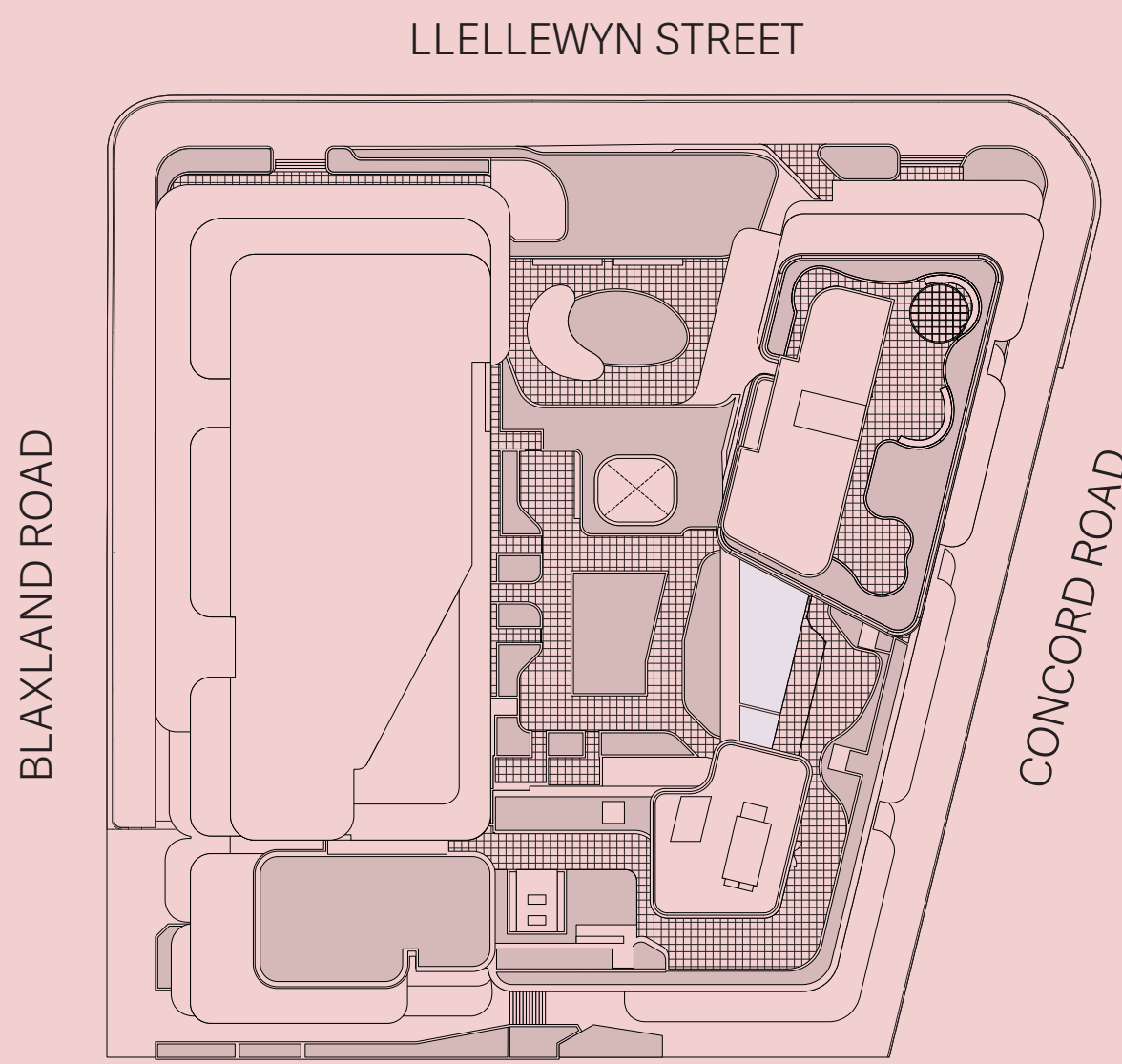
DISCLAIMER: Purchasers take note: These floor plans do not form part of the contract for sale of any lot within the development. They are indicative only. The descriptions, layouts and areas set out in this floor plan are subject to change and may not accurately reflect the final design of each unit depicted.

BAIA

RESIDENCES

LEVEL 5

- One Bed
- One Bed + MPR
- Two Bedroom
- Two Bed + MPR
- Three Bedroom
- Three Bedroom + MPR
- Four Bedroom

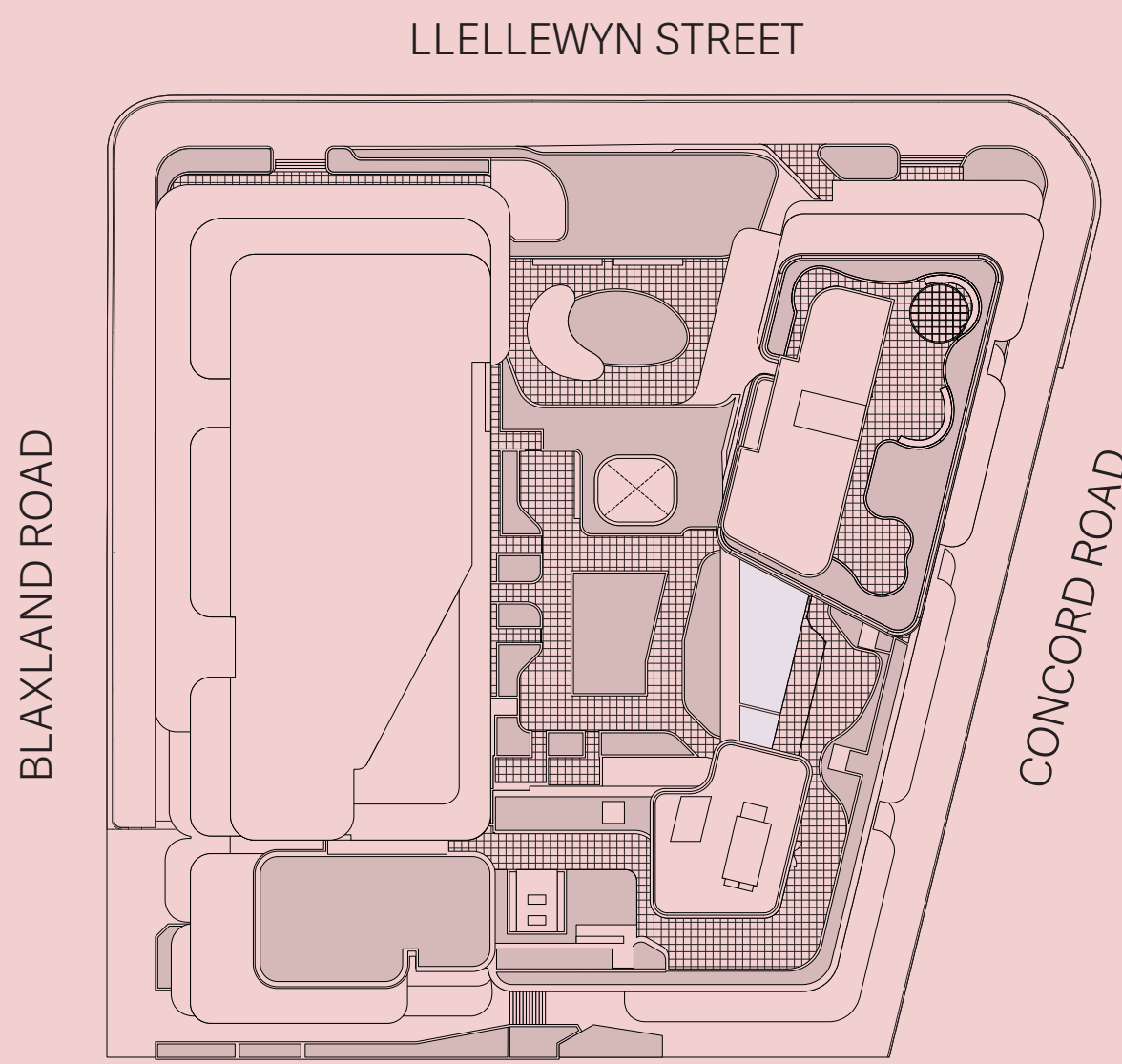


BAIA

RESIDENCES

LEVEL 6

- One Bed
- One Bed + MPR
- Two Bedroom
- Two Bed + MPR
- Three Bedroom
- Three Bedroom + MPR
- Four Bedroom



602
Internal Area: 82 m ²
External Area: 10 m ²
Total Area: 92 m ²

601
Internal Area: 53 m ²
External Area: 10 m ²
Total Area: 63 m ²

612 ADAPTABLE
Internal Area: 117 m ²
External Area: 12 m ²
Total Area: 129 m ²

611
Internal Area: 81 m ²
External Area: 13 m ²
Total Area: 94 m ²

603
Internal Area: 97 m ²
External Area: 12 m ²
Total Area: 109 m ²

604
Internal Area: 81 m ²
External Area: 13 m ²
Total Area: 94 m ²

605
Internal Area: 81 m ²
External Area: 11 m ²
Total Area: 94 m ²

609
Internal Area: 64 m ²
External Area: 10 m ²
Total Area: 74 m ²

610
Internal Area: 80 m ²
External Area: 11 m ²
Total Area: 91 m ²

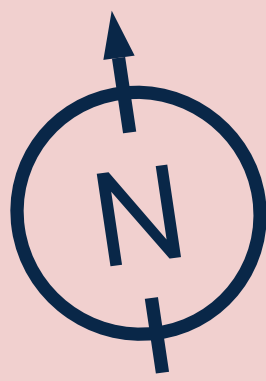
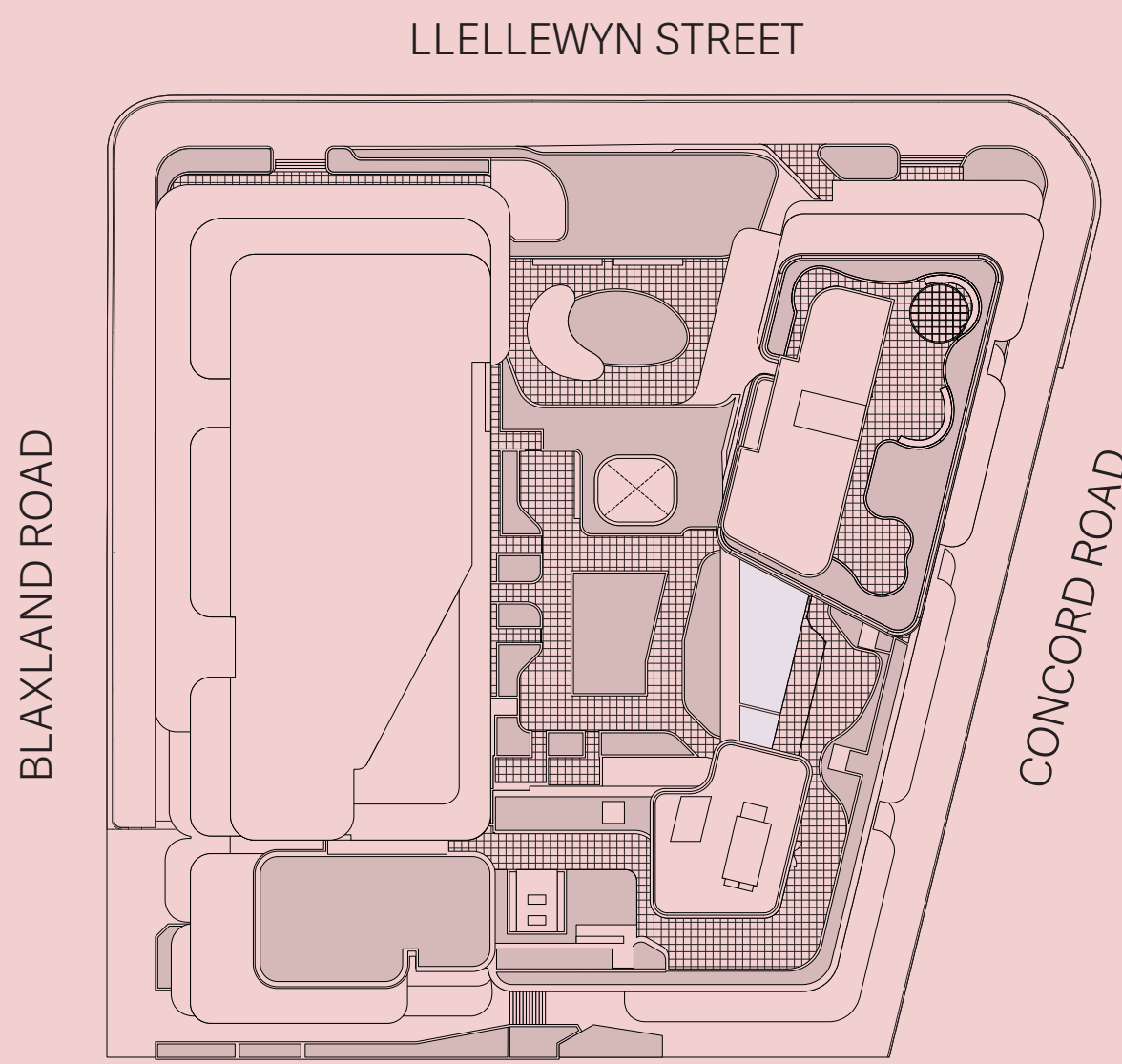


BAIA

RESIDENCES

LEVEL 7

- One Bed
- One Bed + MPR
- Two Bedroom
- Two Bed + MPR
- Three Bedroom
- Three Bedroom + MPR
- Four Bedroom

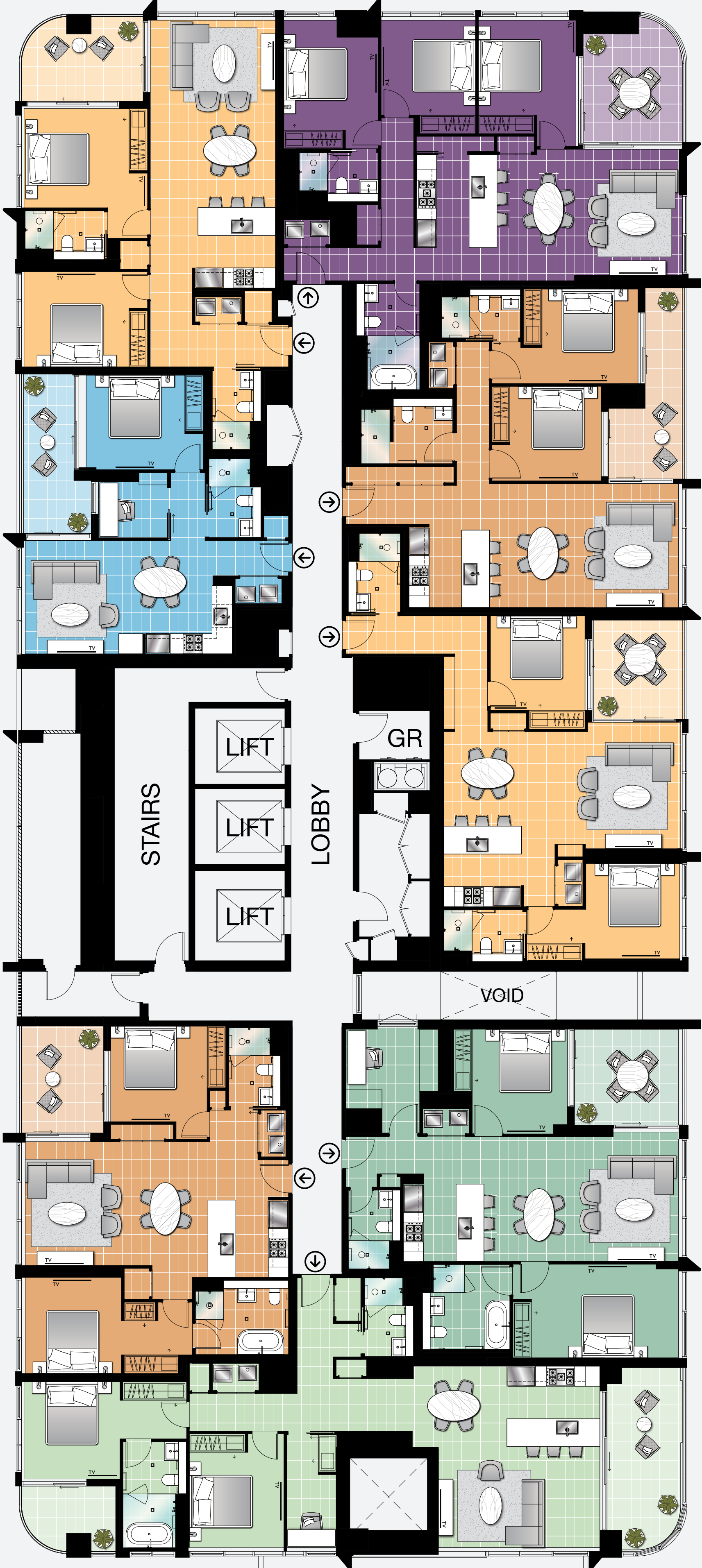


MERITON

702	
Internal Area:	82 m ²
External Area:	10 m ²
Total Area:	92 m ²

701	
Internal Area:	53 m ²
External Area:	10 m ²
Total Area:	63 m ²

708 ADAPTABLE	
Internal Area:	81 m ²
External Area:	10 m ²
Total Area:	91 m ²



703	
Internal Area:	97 m ²
External Area:	12 m ²
Total Area:	109 m ²

704	
Internal Area:	81 m ²
External Area:	13 m ²
Total Area:	94 m ²

705	
Internal Area:	81 m ²
External Area:	10 m ²
Total Area:	91 m ²

706	
Internal Area:	91 m ²
External Area:	11 m ²
Total Area:	102 m ²

707	
Internal Area:	99 m ²
External Area:	19 m ²
Total Area:	118 m ²



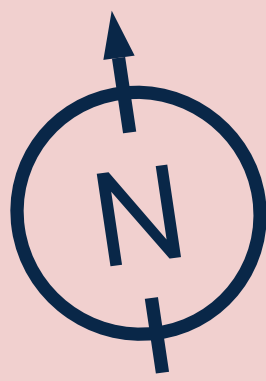
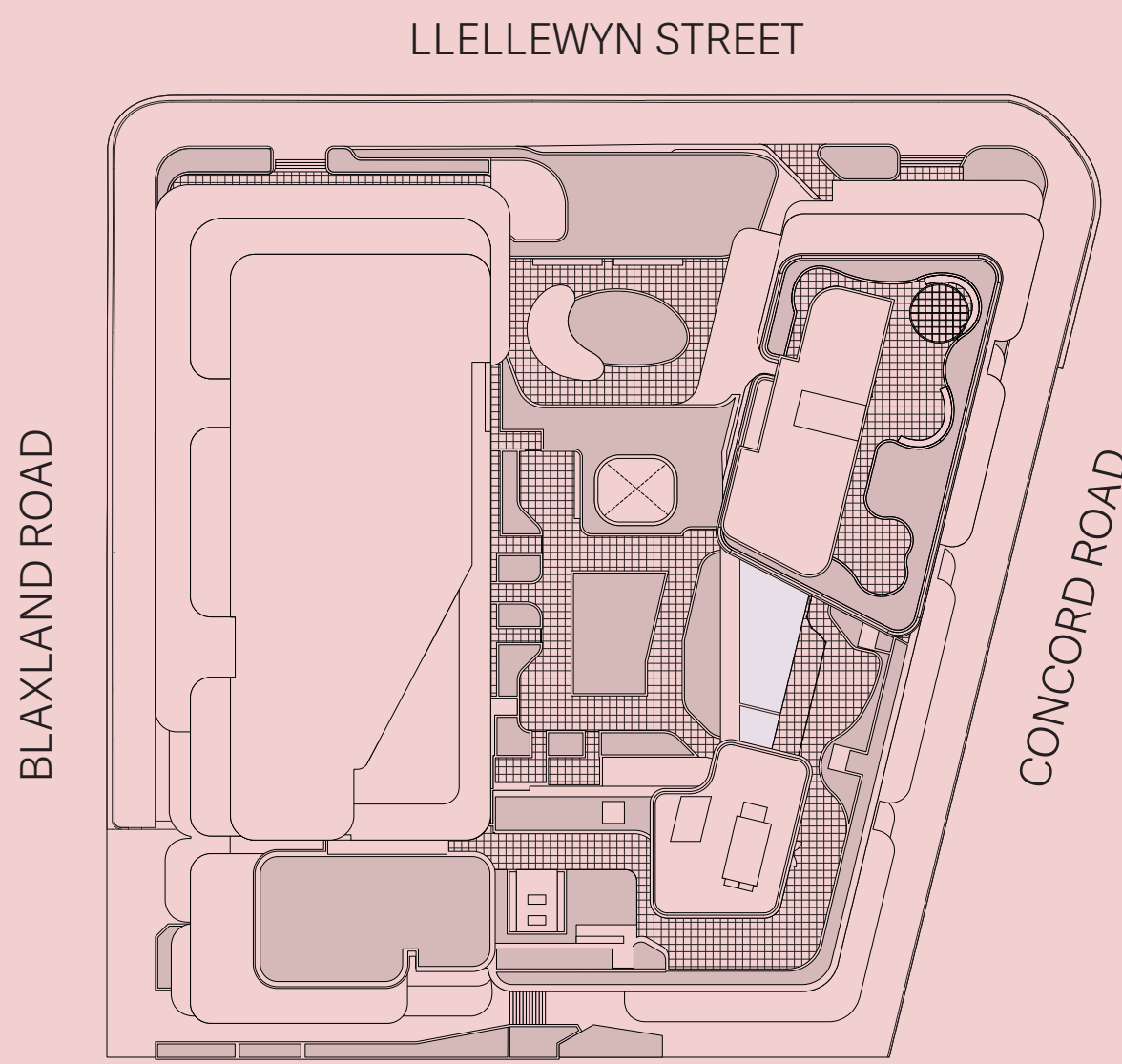
DISCLAIMER: Purchasers take note: These floor plans do not form part of the contract for sale of any lot within the development. They are indicative only. The descriptions, layouts and areas set out in this floor plan are subject to change and may not accurately reflect the final design of each unit depicted.

BAIA

RESIDENCES

LEVEL 8 - 9 - 10

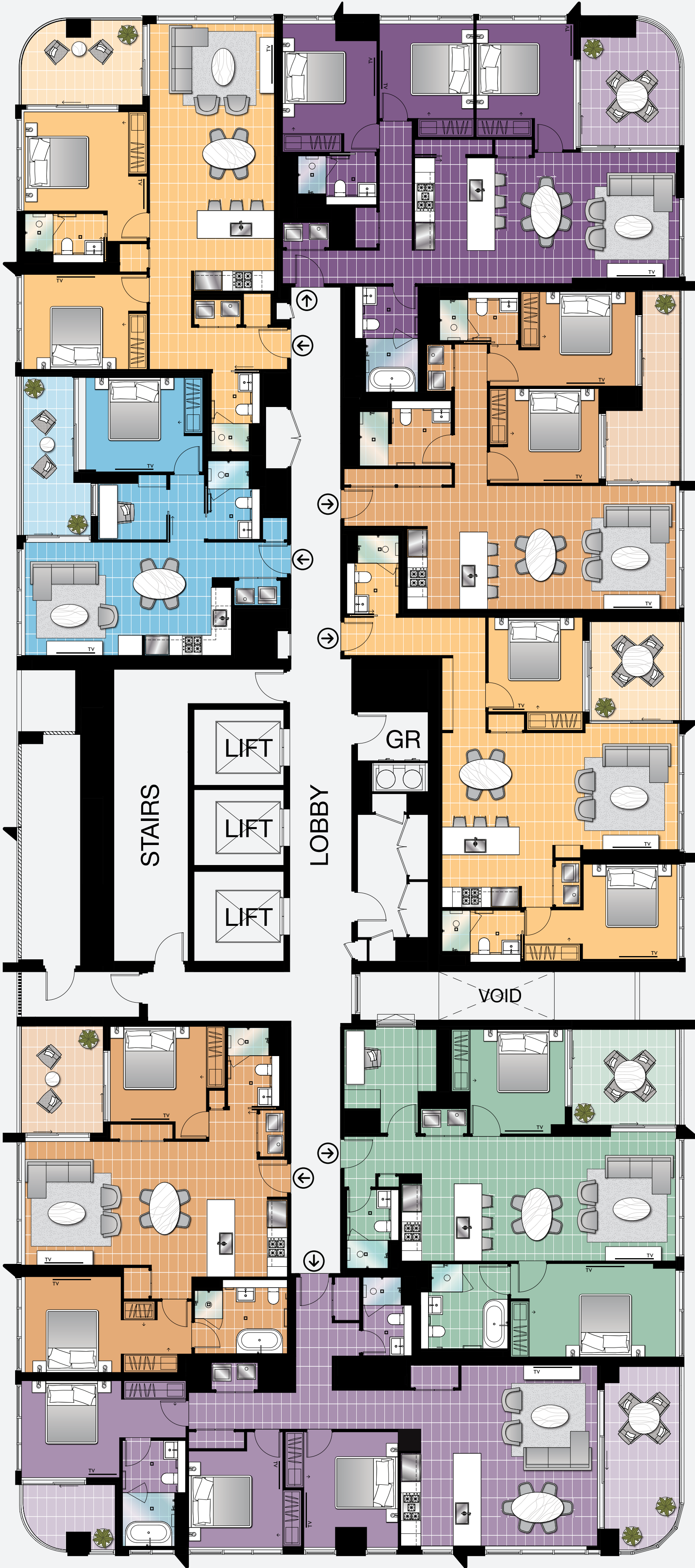
- One Bed
- One Bed + MPR
- Two Bedroom
- Two Bed + MPR
- Three Bedroom
- Three Bedroom + MPR
- Four Bedroom



802 - 1102	
Internal Area:	82 m ²
External Area:	10 m ²
Total Area:	92 m ²

801 - 1101	
Internal Area:	53 m ²
External Area:	10 m ²
Total Area:	63 m ²

808 - 1108 ADAPTABLE	
Internal Area:	81 m ²
External Area:	10 m ²
Total Area:	91 m ²



803 - 1103	
Internal Area:	97 m ²
External Area:	12 m ²
Total Area:	109 m ²

804 - 1104	
Internal Area:	81 m ²
External Area:	10 m ²
Total Area:	91 m ²

805 - 1105	
Internal Area:	81 m ²
External Area:	10 m ²
Total Area:	91 m ²

806 - 1106	
Internal Area:	91 m ²
External Area:	11 m ²
Total Area:	102 m ²

807 - 1107	
Internal Area:	105 m ²
External Area:	19 m ²
Total Area:	124 m ²

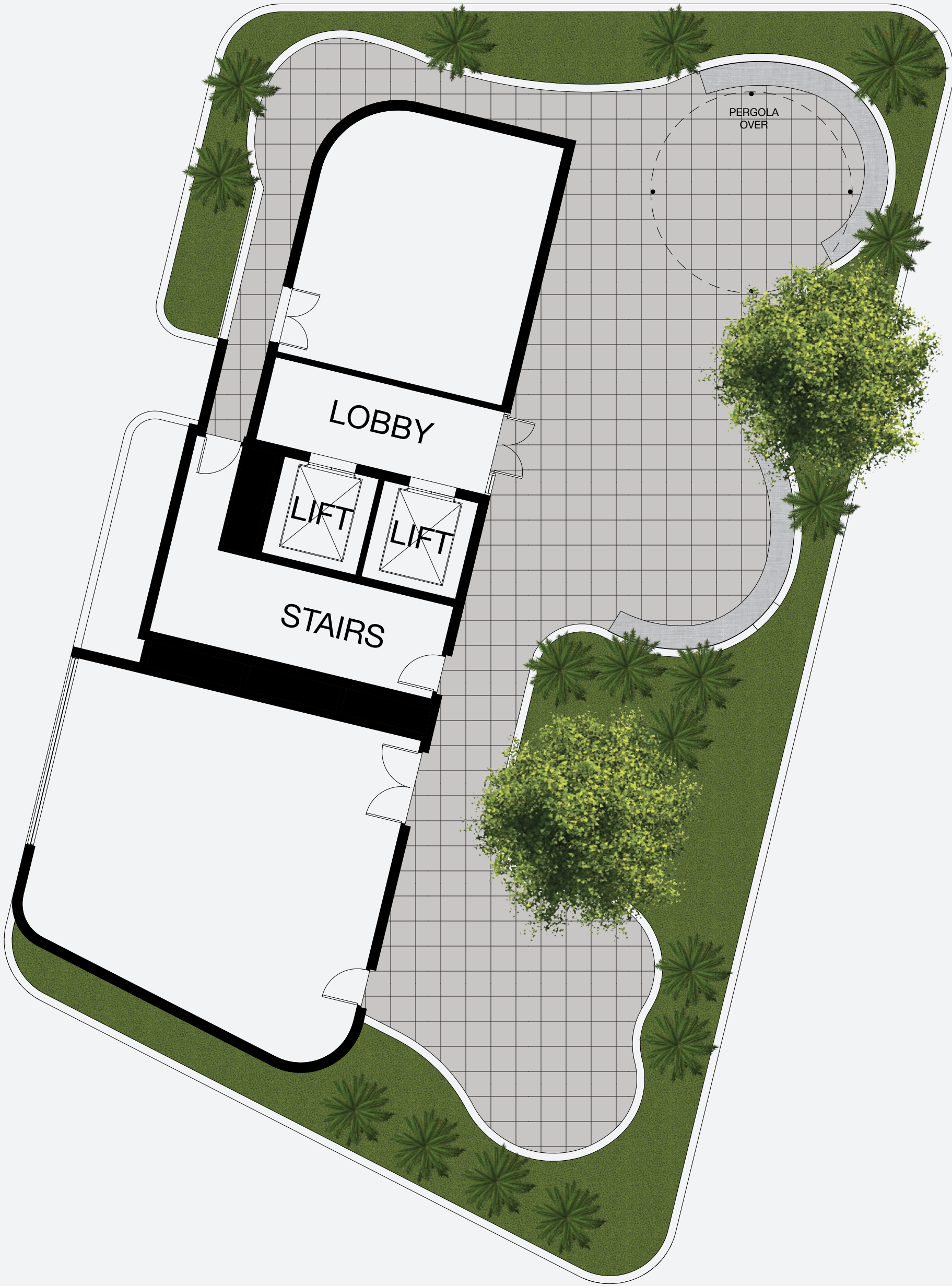
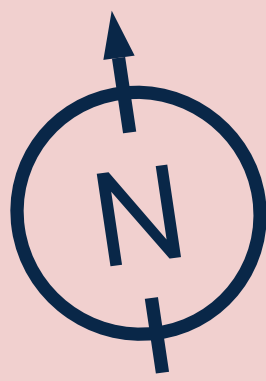
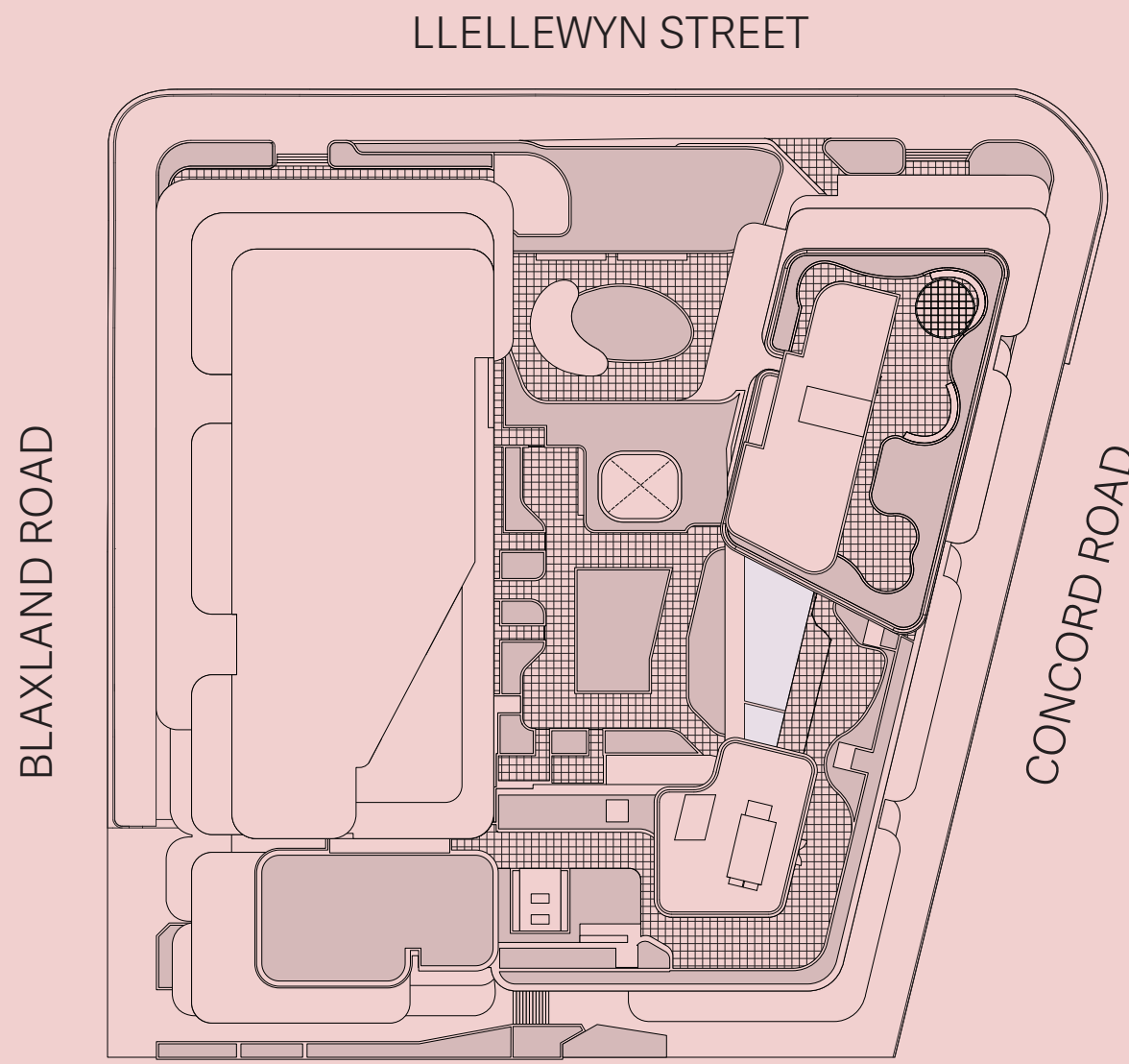


BAIA

RESIDENCES

LEVEL 11

- One Bed
- One Bed + MPR
- Two Bedroom
- Two Bed + MPR
- Three Bedroom
- Three Bedroom + MPR
- Four Bedroom

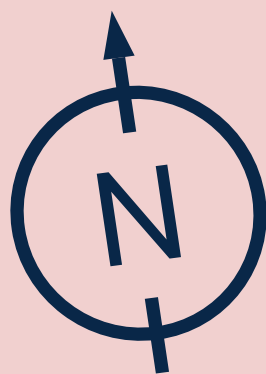
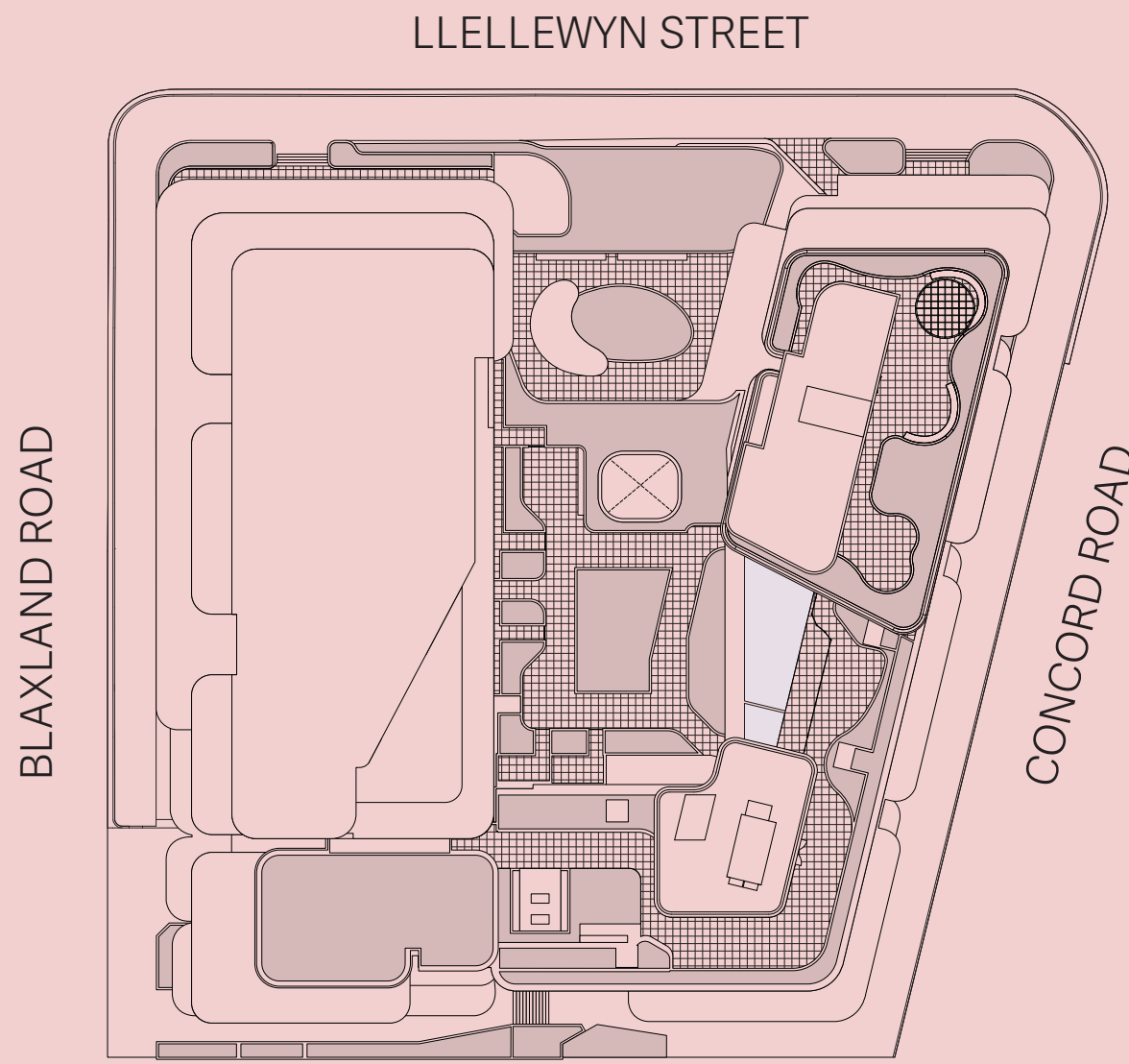


BAIA

RESIDENCES

LEVEL 12

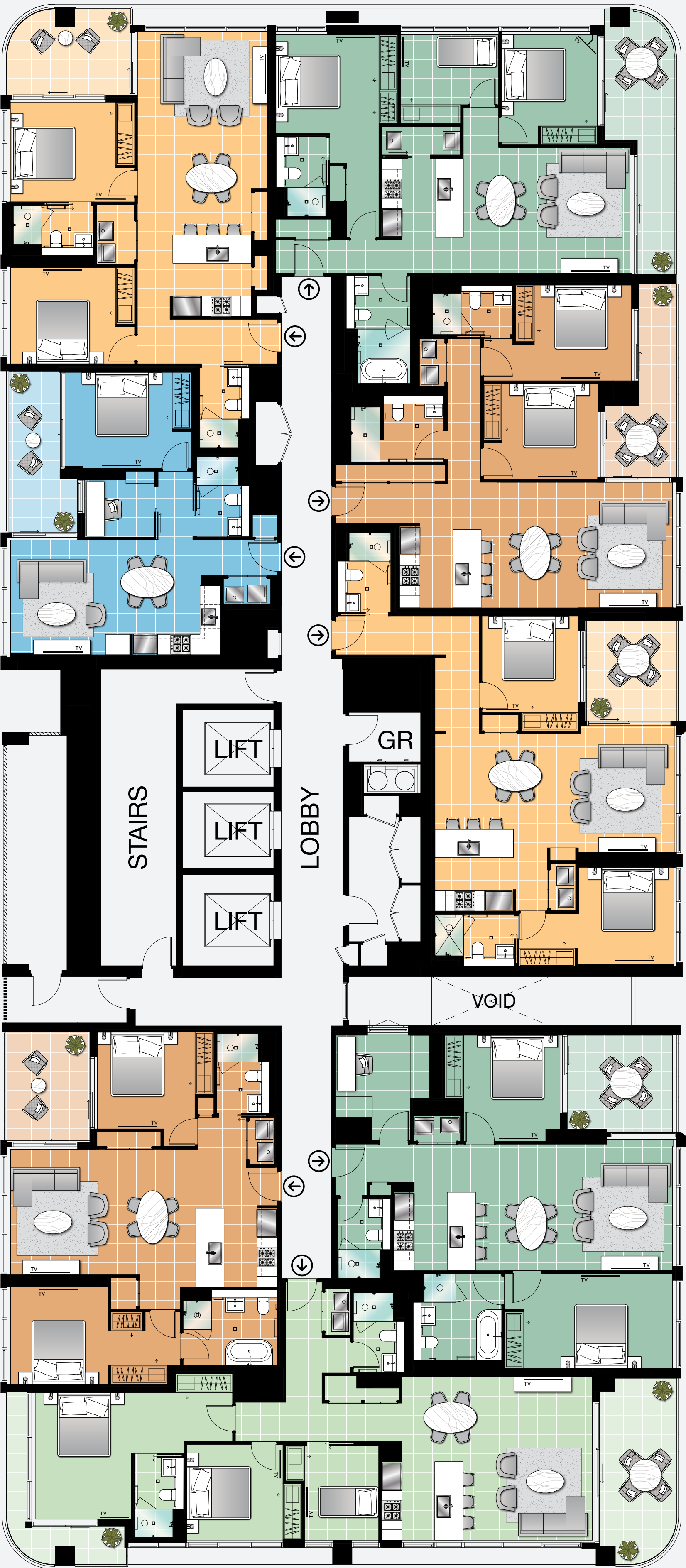
- One Bed
- One Bed + MPR
- Two Bedroom
- Two Bed + MPR
- Three Bedroom
- Three Bedroom + MPR
- Four Bedroom



1202		
Internal Area:	79 m ²	
External Area:	10 m ²	
Total Area:	89 m ²	

1201		
Internal Area:	53 m ²	
External Area:	10 m ²	
Total Area:	63 m ²	

1208 ADAPTABLE		
Internal Area:	81 m ²	
External Area:	10 m ²	
Total Area:	91 m ²	



1203		
Internal Area:	89 m ²	
External Area:	14 m ²	
Total Area:	103 m ²	

1204		
Internal Area:	82 m ²	
External Area:	10 m ²	
Total Area:	92 m ²	

1205		
Internal Area:	81 m ²	
External Area:	10 m ²	
Total Area:	91 m ²	

1206		
Internal Area:	91 m ²	
External Area:	11 m ²	
Total Area:	102 m ²	

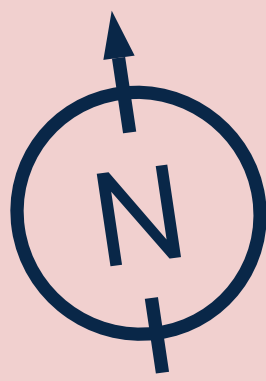
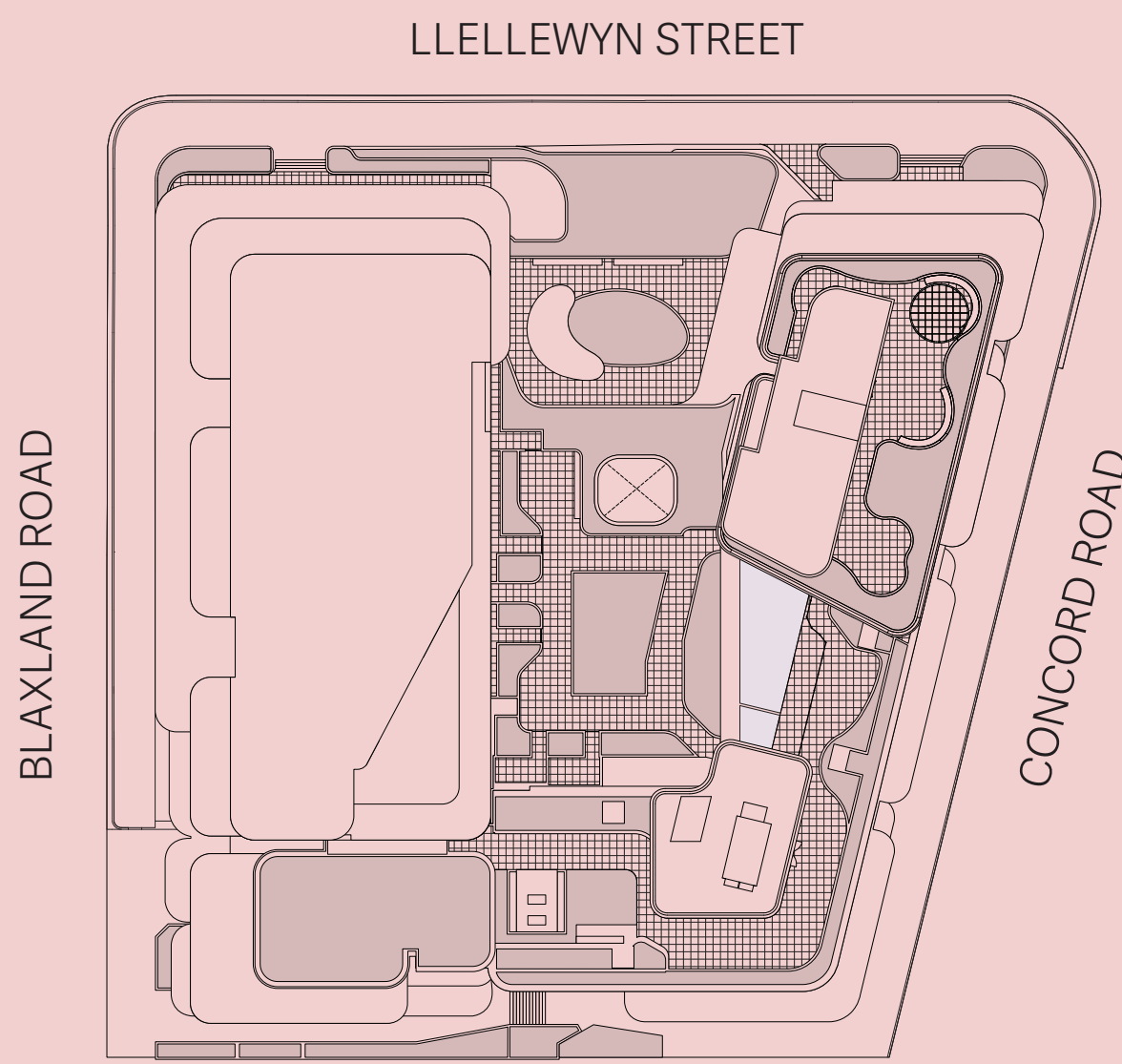
1207		
Internal Area:	98 m ²	
External Area:	20 m ²	
Total Area:	118 m ²	

BAIA

RESIDENCES

LEVEL 13 - 19, 20

- One Bed
- One Bed + MPR
- Two Bedroom
- Two Bed + MPR
- Three Bedroom
- Three Bedroom + MPR
- Four Bedroom



1302 - 1902		
Internal Area:	82 m ²	
External Area:	10 m ²	
Total Area:	92 m ²	

1301 - 1901		
Internal Area:	53 m ²	
External Area:	10 m ²	
Total Area:	63 m ²	

1308 - 1908 ADAPTABLE		
Internal Area:	81 m ²	
External Area:	10 m ²	
Total Area:	91 m ²	

1307 - 1907		
Internal Area:	105 m ²	
External Area:	19 m ²	
Total Area:	124 m ²	

1303 - 1903		
Internal Area:	97 m ²	
External Area:	12 m ²	
Total Area:	109 m ²	

1304 - 1904		
Internal Area:	81 m ²	
External Area:	10 m ²	
Total Area:	91 m ²	

1305 - 1905		
Internal Area:	81 m ²	
External Area:	10 m ²	
Total Area:	91 m ²	

1306 - 1906 ADAPTABLE		
Internal Area:	91 m ²	
External Area:	11 m ²	
Total Area:	102 m ²	

2002		
Internal Area:	79 m ²	
External Area:	10 m ²	
Total Area:	89 m ²	

2001		
Internal Area:	53 m ²	
External Area:	10 m ²	
Total Area:	63 m ²	

2008		
Internal Area:	81 m ²	
External Area:	10 m ²	
Total Area:	91 m ²	

2007		
Internal Area:	98 m ²	
External Area:	20 m ²	
Total Area:	118 m ²	

2003		
Internal Area:	89 m ²	
External Area:	14 m ²	
Total Area:	103 m ²	

2004		
Internal Area:	82 m ²	
External Area:	10 m ²	
Total Area:	92 m ²	

2005		
Internal Area:	81 m ²	
External Area:	10 m ²	
Total Area:	91 m ²	

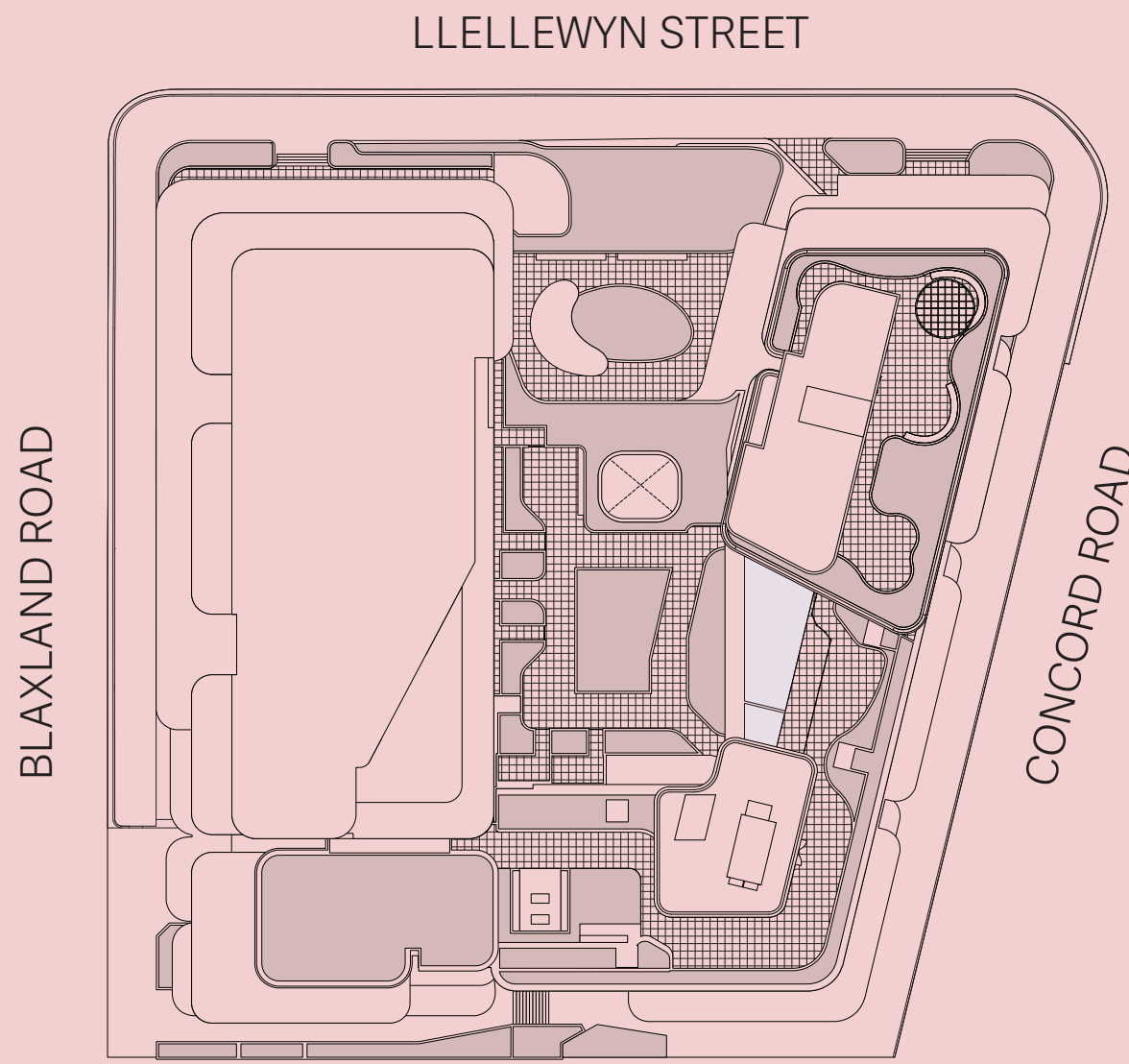
2006		
Internal Area:	90 m ²	
External Area:	11 m ²	
Total Area:	101 m ²	

BAIA

RESIDENCES

LEVEL 21 - 25

- One Bed
- One Bed + MPR
- Two Bedroom
- Two Bed + MPR
- Three Bedroom
- Three Bedroom + MPR
- Four Bedroom



2101 - 2501		
Internal Area:	88 m ²	
External Area:	11 m ²	
Total Area:	99 m ²	

2106 - 2506 ADAPTABLE		
Internal Area:	81 m ²	
External Area:	10 m ²	
Total Area:	90 m ²	

2102 - 2502		
Internal Area:	139 m ²	
External Area:	19 m ²	
Total Area:	158 m ²	

2103 - 2503		
Internal Area:	113 m ²	
External Area:	13 m ²	
Total Area:	126 m ²	

2104 - 2504		
Internal Area:	119 m ²	
External Area:	12 m ²	
Total Area:	131 m ²	

2105 - 2505		
Internal Area:	140 m ²	
External Area:	16 m ²	
Total Area:	156 m ²	



BAIA

RESIDENCES

LEVEL 26 - 27

- One Bed
- One Bed + MPR
- Two Bedroom
- Two Bed + MPR
- Three Bedroom
- Three Bedroom + MPR
- Four Bedroom

